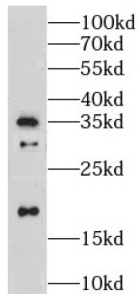
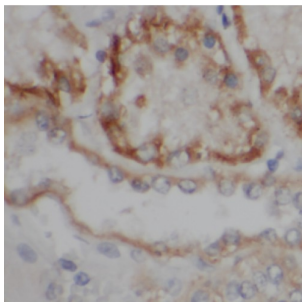


## Lymphocyte Antigen 96 (LY96) Antibody

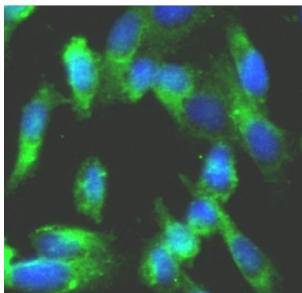
Catalogue No.: abx234900



WB analysis of U-937 cells, using LY96 antibody (1/400 dilution).



IHC-P analysis of human kidney tissue, using LY96 antibody (1/50 dilution).



IF analysis of U2OS cells, using LY96 antibody (1/50 dilution).

LY96 Antibody is a Rabbit Polyclonal against LY96.

**Target:** Lymphocyte Antigen 96 (LY96)

**Clonality:** Polyclonal

**Reactivity:** Human, Mouse, Rat

**Tested Applications:** ELISA, WB, IHC, IF/ICC

**Host:** Rabbit

**Recommended dilutions:** WB: 1/200 - 1/2000, IHC: 1/50 - 1/200, IF/ICC: 1/50 - 1/200. Optimal dilutions/concentrations should be determined by the end user.

**Conjugation:** Unconjugated

# Datasheet

Version: 1.0.0  
Revision date: 12 Mar 2025



<b>Immunogen:</b>	lymphocyte antigen 96
<b>Isotype:</b>	IgG
<b>Form:</b>	Liquid
<b>Purity:</b>	≥ 95% (SDS-PAGE)
<b>Purification:</b>	Purified by immunogen affinity chromatography.
<b>Storage:</b>	Aliquot and store at -20°C. Avoid repeated freeze/thaw cycles.
<b>Validity:</b>	12 months.
<b>UniProt Primary AC:</b>	Q9Y6Y9 ( <a href="#">UniProt</a> , <a href="#">ExPASy</a> )
<b>Gene Symbol:</b>	LY96
<b>GeneID:</b>	<a href="#">23643</a>
<b>OMIM:</b>	<a href="#">605243</a>
<b>HGNC:</b>	17156
<b>Ensembl:</b>	ENSG00000154589
<b>String:</b>	<a href="#">9606.ENSP00000284818</a>
<b>Molecular Weight:</b>	Observed MW: 20 kDa, 30 kDa, 35 kDa
<b>Buffer:</b>	PBS, pH 7.3, with 0.02% sodium azide and 50% glycerol.
<b>Concentration:</b>	2 mg/ml
<b>Note:</b>	THIS PRODUCT IS FOR RESEARCH USE ONLY. NOT FOR USE IN DIAGNOSTIC, THERAPEUTIC OR COSMETIC PROCEDURES. NOT FOR HUMAN OR ANIMAL CONSUMPTION.