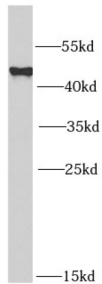
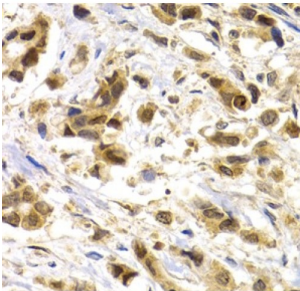


Melanoma-Associated Antigen 1 (MAGEA1) Antibody

Catalogue No.: abx234933



WB analysis of A375 cells, using MAGEA1 antibody (1/1000 dilution).



IHC-P analysis of human breast cancer tissue, using MAGEA1 antibody (1/100 dilution).

MAGEA1 Antibody is a Rabbit Polyclonal against MAGEA1.

Target:	Melanoma-Associated Antigen 1 (MAGEA1)
Clonality:	Polyclonal
Reactivity:	Human, Mouse
Tested Applications:	ELISA, WB, IHC, IF/ICC
Host:	Rabbit
Recommended dilutions:	WB: 1/500 - 1/2000, IHC: 1/50 - 1/200, IF/ICC: 1/50 - 1/100. Optimal dilutions/concentrations should be determined by the end user.
Conjugation:	Unconjugated
Immunogen:	melanoma antigen family A, 1 (directs expression of antigen MZ2-E)
Isotype:	IgG
Form:	Liquid
Purity:	≥ 95% (SDS-PAGE)

Datasheet

Version: 2.0.0
Revision date: 12 Mar 2025



Purification:	Purified by immunogen affinity chromatography.
Storage:	Aliquot and store at -20°C. Avoid repeated freeze/thaw cycles.
Validity:	12 months.
UniProt Primary AC:	P43355 (UniProt , ExpASY)
KEGG:	hsa:4100
String:	9606.ENSP00000349085
Molecular Weight:	Observed MW: 36 kDa
Buffer:	PBS, pH 7.3, with 0.02% sodium azide and 50% glycerol.
Concentration:	2 mg/ml
Note:	THIS PRODUCT IS FOR RESEARCH USE ONLY. NOT FOR USE IN DIAGNOSTIC, THERAPEUTIC OR COSMETIC PROCEDURES. NOT FOR HUMAN OR ANIMAL CONSUMPTION.

For Reference Only