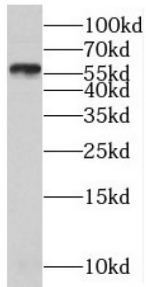
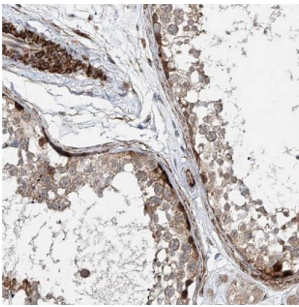


Melanoma Antigen Family B18 (MAGEB18) Antibody

Catalogue No.: abx234942



WB analysis of MCF7 cells, using MAGEB18 antibody (1/500 dilution).



IHC-P analysis of human testis tissue, using MAGEB18 antibody (1/100 dilution).

MAGEB18 Antibody is a Rabbit Polyclonal against MAGEB18.

Target:	Melanoma Antigen Family B18 (MAGEB18)
Clonality:	Polyclonal
Reactivity:	Human
Tested Applications:	ELISA, WB, IHC, IF/ICC
Host:	Rabbit
Recommended dilutions:	WB: 1/500 - 1/2000, IHC: 1/20 - 1/200, IF/ICC: 1/20 - 1/200. Optimal dilutions/concentrations should be determined by the end user.
Conjugation:	Unconjugated
Immunogen:	melanoma antigen family B, 18
Isotype:	IgG
Form:	Liquid
Purity:	≥ 95% (SDS-PAGE)

Datasheet

Version: 1.0.0
Revision date: 12 Mar 2025



Purification:	Purified by immunogen affinity chromatography.
Storage:	Aliquot and store at -20°C. Avoid repeated freeze/thaw cycles.
Validity:	12 months.
UniProt Primary AC:	Q96M61 (UniProt , ExpASY)
Gene Symbol:	MAGEB18
GeneID:	286514
HGNC:	28515
KEGG:	hsa:286514
Ensembl:	ENSG00000176774
String:	9606.ENSP00000314543
Molecular Weight:	Observed MW: 55-60 kDa
Buffer:	PBS, pH 7.3, with 0.02% sodium azide and 50% glycerol.
Concentration:	2 mg/ml
Note:	THIS PRODUCT IS FOR RESEARCH USE ONLY. NOT FOR USE IN DIAGNOSTIC, THERAPEUTIC OR COSMETIC PROCEDURES. NOT FOR HUMAN OR ANIMAL CONSUMPTION.

For Reference Only