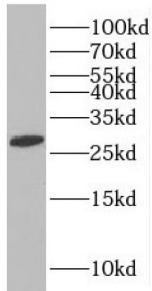
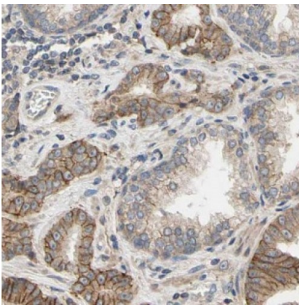


## MAGE Family Member H1 (MAGEH1) Antibody

Catalogue No.: abx234951



WB analysis of Y79 cells, using MAGEH1 antibody (1/600 dilution).



IHC-P analysis of human prostate cancer tissue, using MAGEH1 Antibody (1/50 dilution).

MAGEH1 Antibody is a Rabbit Polyclonal against MAGEH1.

**Target:** MAGE Family Member H1 (MAGEH1)

**Clonality:** Polyclonal

**Reactivity:** Human, Mouse, Rat

**Tested Applications:** ELISA, WB, IHC

**Host:** Rabbit

**Recommended dilutions:** WB: 1/500 - 1/2000, IHC: 1/20 - 1/200. Optimal dilutions/concentrations should be determined by the end user.

**Conjugation:** Unconjugated

**Immunogen:** melanoma antigen family H, 1

**Isotype:** IgG

**Form:** Liquid

**Purity:** ≥ 95% (SDS-PAGE)

# Datasheet

Version: 3.0.0  
Revision date: 31 Jan 2025



<b>Purification:</b>	Purified by immunogen affinity chromatography.
<b>Storage:</b>	Aliquot and store at -20°C. Avoid repeated freeze/thaw cycles.
<b>Validity:</b>	12 months.
<b>UniProt Primary AC:</b>	Q9H213 ( <a href="#">UniProt</a> , <a href="#">ExpASY</a> )
<b>Gene Symbol:</b>	MAGEH1
<b>GeneID:</b>	<a href="#">28986</a>
<b>OMIM:</b>	<a href="#">300548</a>
<b>HGNC:</b>	24092
<b>Ensembl:</b>	ENSG00000187601
<b>String:</b>	<a href="#">9606.ENSP00000343706</a>
<b>Molecular Weight:</b>	Observed MW: 28 kDa
<b>Buffer:</b>	PBS, pH 7.3, with 0.02% sodium azide and 50% glycerol.
<b>Concentration:</b>	2 mg/ml
<b>Note:</b>	This product is for research use only.

For Reference Only