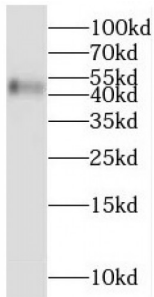
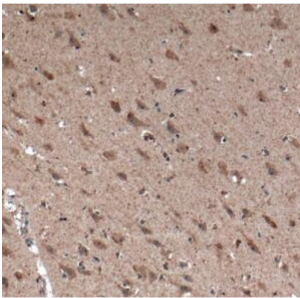


Melanin Concentrating Hormone Receptor 1 (MCHR1) Antibody

Catalogue No.: abx235051



WB analysis of SH-SY5Y cells, using MCHR1 antibody (1/1000 dilution).



IHC-P analysis of human heart tissue, using MCHR1 Antibody (1/50 dilution).

MCHR1 Antibody is a Rabbit Polyclonal against MCHR1.

Target:	Melanin Concentrating Hormone Receptor 1 (MCHR1)
Clonality:	Polyclonal
Reactivity:	Human, Mouse, Rat
Tested Applications:	ELISA, WB, IHC
Host:	Rabbit
Recommended dilutions:	WB: 1/500 - 1/2000, IHC: 1/20 - 1/200. Optimal dilutions/concentrations should be determined by the end user.
Conjugation:	Unconjugated
Immunogen:	melanin-concentrating hormone receptor 1
Isotype:	IgG
Form:	Liquid
Purity:	≥ 95% (SDS-PAGE)

Datasheet

Version: 2.0.0
Revision date: 29 Nov 2023



Purification:	Purified by immunogen affinity chromatography.
Storage:	Aliquot and store at -20°C. Avoid repeated freeze/thaw cycles.
Validity:	12 months.
UniProt Primary AC:	Q99705 (UniProt , ExPASy)
Gene Symbol:	MCHR1
GeneID:	2847
KEGG:	hsa:2847
String:	9606.ENSP00000249016
Molecular Weight:	Observed MW: 46 kDa
Buffer:	PBS, pH 7.3, with 0.02% sodium azide and 50% glycerol.
Concentration:	2 mg/ml
Note:	This product is for research use only.

For Reference Only