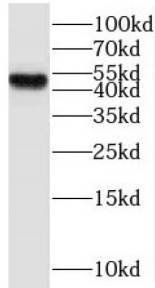


# MAP Kinase-Interacting Serine/Threonine-Protein Kinase 2 (MKNK2) Antibody

Catalogue No.: abx235204



WB analysis of mouse spleen tissue, using MKNK2 antibody (1/300 dilution).

MKNK2 Antibody is a Rabbit Polyclonal against MKNK2.

<b>Target:</b>	MAP Kinase-Interacting Serine/Threonine-Protein Kinase 2 (MKNK2)
<b>Clonality:</b>	Polyclonal
<b>Reactivity:</b>	Human, Mouse, Rat
<b>Tested Applications:</b>	ELISA, WB
<b>Host:</b>	Rabbit
<b>Recommended dilutions:</b>	WB: 1/500 - 1/2000. Optimal dilutions/concentrations should be determined by the end user.
<b>Conjugation:</b>	Unconjugated
<b>Immunogen:</b>	MAP kinase interacting serine/threonine kinase 2
<b>Isotype:</b>	IgG
<b>Form:</b>	Liquid
<b>Purity:</b>	≥ 95% (SDS-PAGE)
<b>Purification:</b>	Purified by immunogen affinity chromatography.
<b>Storage:</b>	Aliquot and store at -20°C. Avoid repeated freeze/thaw cycles.
<b>Validity:</b>	12 months.

# Datasheet

Version: 2.0.0  
Revision date: 31 Mar 2025



**UniProt Primary AC:** Q9HBH9 ([UniProt](#), [ExPASy](#))

**Gene Symbol:** MKNK2

**GeneID:** [2872](#)

**OMIM:** [605069](#)

**HGNC:** 7111

**KEGG:** hsa:2872

**Ensembl:** ENSG00000099875

**String:** [9606.ENSP00000250896](#)

**Molecular Weight:** Observed MW: 47 kDa

**Buffer:** PBS, pH 7.3, with 0.02% sodium azide and 50% glycerol.

**Concentration:** 2 mg/ml

**Note:** THIS PRODUCT IS FOR RESEARCH USE ONLY. NOT FOR USE IN DIAGNOSTIC, THERAPEUTIC OR COSMETIC PROCEDURES. NOT FOR HUMAN OR ANIMAL CONSUMPTION.

For Reference Only