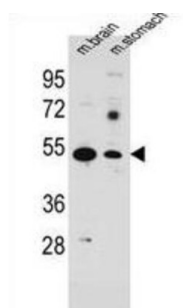
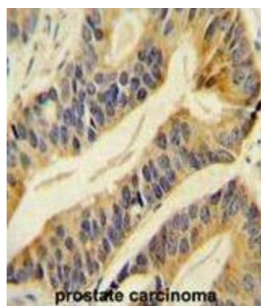
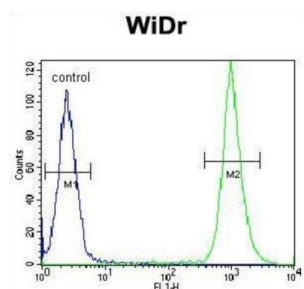


Solute Carrier Family 16 Member 11 (SLC16A11) Antibody

Catalogue No.: abx025985



Proton-linked monocarboxylate transporter. Catalyzes the rapid transport across the plasma membrane of many monocarboxylates (By similarity).

Target: Solute Carrier Family 16 Member 11 (SLC16A11)

Clonality: Polyclonal

Reactivity: Human, Mouse

Tested Applications: ELISA, WB, IHC, FCM

Host: Rabbit

Recommended dilutions: WB: 1/2000, IHC-P: 1/100, FCM: 1/10 - 1/50. Not tested in IHC-F. Optimal dilutions/concentrations should be determined by the end user.

Datasheet

Version: 2.0.0

Revision date: 16 Apr 2025



Conjugation:	Unconjugated
Immunogen:	KLH-conjugated synthetic peptide between 48-76 amino acids from the N-terminal region of human SLC16A11.
Isotype:	IgG
Form:	Liquid
Purification:	Purified through a protein A column, followed by peptide affinity purification.
Storage:	Aliquot and store at -20°C. Avoid repeated freeze/thaw cycles.
UniProt Primary AC:	Q8NCK7 (UniProt , ExPASy)
Gene Symbol:	SLC16A11
KEGG:	hsa:162515
String:	9606.ENSP00000310490
Molecular Weight:	Calculated MW: 47.8 kDa
Buffer:	PBS containing 0.09% sodium azide.
Note:	THIS PRODUCT IS FOR RESEARCH USE ONLY. NOT FOR USE IN DIAGNOSTIC, THERAPEUTIC OR COSMETIC PROCEDURES. NOT FOR HUMAN OR ANIMAL CONSUMPTION.