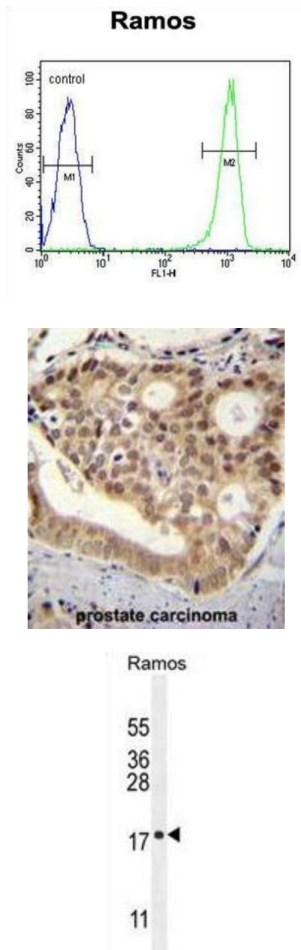


Chromosome 11 Open Reading Frame 53 (C11orf53) Antibody

Catalogue No.: abx025988



The specific function of C11orf53 remains unknown.

Target: Chromosome 11 Open Reading Frame 53 (C11orf53)

Clonality: Polyclonal

Reactivity: Human

Tested Applications: ELISA, WB, IHC, FCM

Host: Rabbit

Recommended dilutions: WB: 1/1000, IHC-P: 1/50 - 1/100, FCM: 1/10 - 1/50. Not tested in IHC-F. Optimal dilutions/concentrations should be determined by the end user.

Conjugation: Unconjugated

Datasheet

Version: 2.0.0
Revision date: 09 Jan 2025



Immunogen:	KLH-conjugated synthetic peptide between 187-215 amino acids from the C-terminal region of human C11orf53.
Isotype:	IgG
Form:	Liquid
Purification:	Purified through a protein A column, followed by peptide affinity purification.
Storage:	Aliquot and store at -20°C. Avoid repeated freeze/thaw cycles.
UniProt Primary AC:	Q8IXP5 (UniProt , ExPASy)
Gene Symbol:	C11ORF53
KEGG:	hsa:341032
String:	9606.ENSP00000280325
Molecular Weight:	Calculated MW: 25.4 kDa
Buffer:	PBS containing 0.09% sodium azide.
Note:	This product is for research use only.

For Reference Only