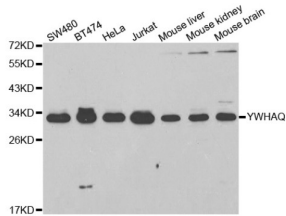
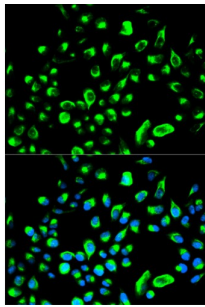


## 14-3-3 Protein Theta (YWHAQ) Antibody

Catalogue No.: abx002000



Western blot analysis of extracts of various cell lines, using YWHAQ antibody (abx002000) at 1/1000 dilution.



Immunofluorescence analysis of HeLa cells using YWHAQ antibody (abx002000). Blue: DAPI for nuclear staining.

YWHAQ Antibody is a Rabbit Polyclonal antibody against YWHAQ. This gene product belongs to the 14-3-3 family of proteins which mediate signal transduction by binding to phosphoserine-containing proteins. This highly conserved protein family is found in both plants and mammals, and this protein is 99% identical to the mouse and rat orthologs. This gene is upregulated in patients with amyotrophic lateral sclerosis. It contains in its 5' UTR a 6 bp tandem repeat sequence which is polymorphic, however, there is no correlation between the repeat number and the disease.

**Target:** 14-3-3 Protein Theta (YWHAQ)

**Clonality:** Polyclonal

**Reactivity:** Human, Mouse, Rat

**Tested Applications:** WB

**Host:** Rabbit

**Recommended dilutions:** WB: 1/500 - 1/2000. Optimal dilutions/concentrations should be determined by the end user.

**Conjugation:** Unconjugated

**Immunogen:** A synthetic peptide corresponding to a sequence within amino acids 49-149 of human 14-3-3 Theta.

**Isotype:** IgG

# Datasheet

Version: 3.0.0  
Revision date: 10 Oct 2024



<b>Form:</b>	Liquid
<b>Purification:</b>	Purified by affinity chromatography.
<b>Storage:</b>	Aliquot and store at -20°C. Avoid repeated freeze/thaw cycles.
<b>UniProt Primary AC:</b>	P27348 ( <a href="#">UniProt</a> , <a href="#">ExpASY</a> )
<b>Gene Symbol:</b>	YWHAQ
<b>GeneID:</b>	<a href="#">10971</a>
<b>NCBI Accession:</b>	NP_006817.1
<b>KEGG:</b>	hsa:10971
<b>String:</b>	<a href="#">9606.ENSP00000371267</a>
<b>Molecular Weight:</b>	Calculated MW: 28 kDa Observed MW: 32 kDa
<b>Buffer:</b>	PBS, pH 7.3, containing 0.09% sodium azide, 50% glycerol.
<b>Concentration:</b>	> 0.2 mg/ml
<b>Note:</b>	This product is for research use only.

For Reference Only