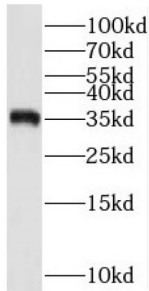
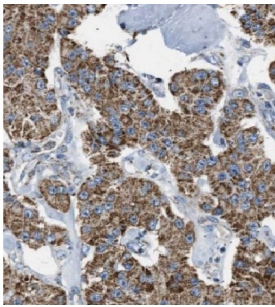


Membrane Spanning 4-Domains A12 (MS4A12) Antibody

Catalogue No.: abx235368



WB analysis of SH-SY5Y cells, using MS4A12 antibody (1/300 dilution).



IHC-P analysis of human colon cancer tissue, using MS4A12 Antibody (1/50 dilution).

MS4A12 Antibody is a Rabbit Polyclonal against MS4A12.

Target:	Membrane Spanning 4-Domains A12 (MS4A12)
Clonality:	Polyclonal
Reactivity:	Human, Mouse
Tested Applications:	ELISA, WB, IHC
Host:	Rabbit
Recommended dilutions:	WB: 1/500 - 1/2000, IHC: 1/20 - 1/200. Optimal dilutions/concentrations should be determined by the end user.
Conjugation:	Unconjugated
Immunogen:	membrane-spanning 4-domains, subfamily A, member 12
Isotype:	IgG
Form:	Liquid
Purity:	≥ 95% (SDS-PAGE)

Datasheet

Version: 1.0.0
Revision date: 15 Jan 2025



Purification:	Purified by immunogen affinity chromatography.
Storage:	Aliquot and store at -20°C. Avoid repeated freeze/thaw cycles.
Validity:	12 months.
UniProt Primary AC:	Q9NXJ0 (UniProt , ExPASy)
Gene Symbol:	MS4A12
GeneID:	54860
OMIM:	606550
HGNC:	13370
Ensembl:	ENSG00000071203
String:	9606.ENSP00000016913
Molecular Weight:	Observed MW: 35 kDa
Buffer:	PBS, pH 7.3, with 0.02% sodium azide and 50% glycerol.
Concentration:	2 mg/ml
Note:	This product is for research use only.

For Reference Only