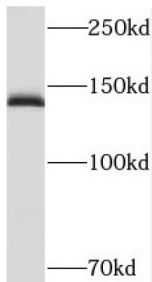
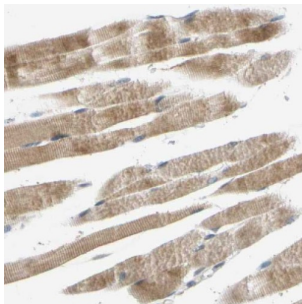


Myosin Binding Protein C, Slow Type (MYBPC1) Antibody

Catalogue No.: abx235454



WB analysis of mouse skeletal muscle tissue, using MYBPC1 antibody (1/800 dilution).



IHC-P analysis of human skeletal muscle tissue, using MYBPC1 antibody (1/50 dilution).

MYBPC1 Antibody is a Rabbit Polyclonal against MYBPC1.

Target: Myosin Binding Protein C, Slow Type (MYBPC1)**Clonality:** Polyclonal**Reactivity:** Human, Mouse, Rat**Tested Applications:** ELISA, WB, IHC**Host:** Rabbit**Recommended dilutions:** WB: 1/500 - 1/2000, IHC: 1/20 - 1/200. Optimal dilutions/concentrations should be determined by the end user.**Conjugation:** Unconjugated**Immunogen:** myosin binding protein C, slow type**Isotype:** IgG**Form:** Liquid**Purity:** ≥ 95% (SDS-PAGE)

Datasheet

Version: 3.0.0
Revision date: 13 Mar 2025



Purification:	Purified by immunogen affinity chromatography.
Storage:	Aliquot and store at -20°C. Avoid repeated freeze/thaw cycles.
Validity:	12 months.
UniProt Primary AC:	Q00872 (UniProt , ExPASy)
Gene Symbol:	MYBPC1
GeneID:	4604
OMIM:	160794
HGNC:	7549
KEGG:	hsa:4604
Ensembl:	ENSG00000196091
String:	9606.ENSP00000400908
Molecular Weight:	Observed MW: 135-140 kDa
Buffer:	PBS, pH 7.3, with 0.02% sodium azide and 50% glycerol.
Concentration:	2 mg/ml
Note:	THIS PRODUCT IS FOR RESEARCH USE ONLY. NOT FOR USE IN DIAGNOSTIC, THERAPEUTIC OR COSMETIC PROCEDURES. NOT FOR HUMAN OR ANIMAL CONSUMPTION.

For Reference Only