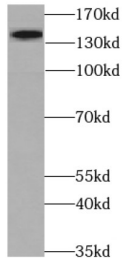
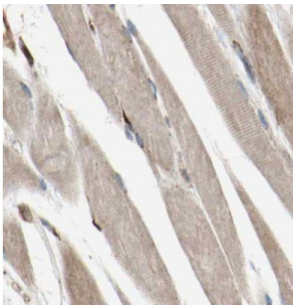


MYPN-Specific Antibody

Catalogue No.: abx235525



WB analysis of HeLa cells, using MYPN-Specific antibody (1/300 dilution).



IHC-P analysis of human skeletal muscle tissue, using MYPN-Specific Antibody (1/50 dilution).

MYPN-Specific Antibody is a Rabbit Polyclonal against MYPN-Specific.

Target: MYPN-Specific

Clonality: Polyclonal

Reactivity: Human

Tested Applications: ELISA, WB, IHC, IF/ICC

Host: Rabbit

Recommended dilutions: WB: 1/500 - 1/1000, IHC: 1/20 - 1/200, IF/ICC: 1/10 - 1/100. Optimal dilutions/concentrations should be determined by the end user.

Conjugation: Unconjugated

Immunogen: myopalladin

Isotype: IgG

Form: Liquid

Purity: ≥ 95% (SDS-PAGE)

Datasheet

Version: 1.0.0
Revision date: 31 Jan 2025



Purification:	Purified by immunogen affinity chromatography.
Storage:	Aliquot and store at -20°C. Avoid repeated freeze/thaw cycles.
Validity:	12 months.
UniProt Primary AC:	Q86TC9 (UniProt , ExPASy)
Gene Symbol:	MYPN
GeneID:	84665
OMIM:	608517
HGNC:	23246
KEGG:	hsa:84665
Ensembl:	ENSG00000138347
String:	9606.ENSP00000351790
Molecular Weight:	Observed MW: 145 kDa
Buffer:	PBS, pH 7.3, with 0.02% sodium azide and 50% glycerol.
Concentration:	2 mg/ml
Note:	This product is for research use only.

For Reference Only