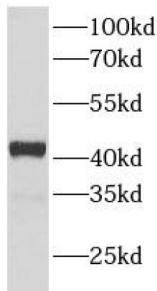
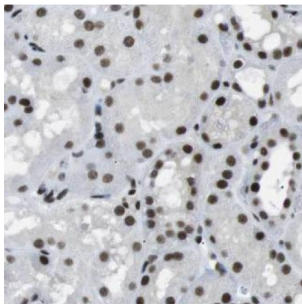


## Nuclear Receptor Subfamily 2 Group F Member 6 (NR2F6) Antibody

Catalogue No.: abx235845



WB analysis of HeLa cells, using NR2F6 antibody (1/2000 dilution).



IHC-P analysis of human kidney tissue, using NR2F6 antibody (1/50 dilution).

NR2F6 Antibody is a Mouse Monoclonal against NR2F6.

<b>Target:</b>	Nuclear Receptor Subfamily 2 Group F Member 6 (NR2F6)
<b>Clonality:</b>	Monoclonal
<b>Reactivity:</b>	Human
<b>Tested Applications:</b>	ELISA, WB, IHC
<b>Host:</b>	Mouse
<b>Recommended dilutions:</b>	WB: 1/1000 - 1/4000, IHC: 1/20 - 1/200. Optimal dilutions/concentrations should be determined by the end user.
<b>Conjugation:</b>	Unconjugated
<b>Immunogen:</b>	nuclear receptor subfamily 2, group F, member 6
<b>Isotype:</b>	IgG <sub>2a</sub>
<b>Form:</b>	Liquid
<b>Purity:</b>	≥ 95% (SDS-PAGE)

# Datasheet

Version: 1.0.0  
Revision date: 14 Jan 2025



<b>Purification:</b>	Purified by Protein A and Protein G affinity chromatography.
<b>Storage:</b>	Aliquot and store at -20°C. Avoid repeated freeze/thaw cycles.
<b>Validity:</b>	12 months.
<b>UniProt Primary AC:</b>	P10588 ( <a href="#">UniProt</a> , <a href="#">ExpASY</a> )
<b>Gene Symbol:</b>	NR2F6
<b>GeneID:</b>	<a href="#">2063</a>
<b>KEGG:</b>	hsa:2063
<b>String:</b>	<a href="#">9606.ENSP00000291442</a>
<b>Molecular Weight:</b>	Observed MW: 42 kDa
<b>Buffer:</b>	PBS, pH 7.3, with 0.02% sodium azide and 50% glycerol.
<b>Concentration:</b>	2 mg/ml
<b>Note:</b>	This product is for research use only.

For Reference Only