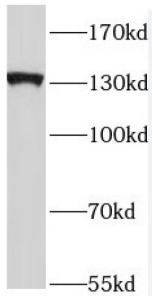
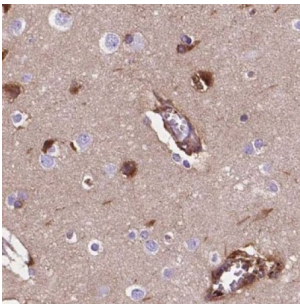


## Neuronal Cell Adhesion Molecule (NRCAM) Antibody

Catalogue No.: abx235852



WB analysis of HEK-293 cells, using NRCAM antibody (1/500 dilution).



IHC-P analysis of human brain tissue, using NRCAM antibody (1/50 dilution).

NRCAM Antibody is a Rabbit Polyclonal against NRCAM.

**Target:** Neuronal Cell Adhesion Molecule (NRCAM)**Clonality:** Polyclonal**Reactivity:** Human, Mouse, Rat**Tested Applications:** ELISA, WB, IHC**Host:** Rabbit**Recommended dilutions:** WB: 1/500 - 1/2000, IHC: 1/20 - 1/200. Optimal dilutions/concentrations should be determined by the end user.**Conjugation:** Unconjugated**Immunogen:** neuronal cell adhesion molecule**Isotype:** IgG**Form:** Liquid**Purity:** ≥ 95% (SDS-PAGE)

# Datasheet

Version: 1.0.0  
Revision date: 01 Sep 2024



<b>Purification:</b>	Purified by immunogen affinity chromatography.
<b>Storage:</b>	Aliquot and store at -20°C. Avoid repeated freeze/thaw cycles.
<b>Validity:</b>	12 months.
<b>UniProt Primary AC:</b>	Q92823 ( <a href="#">UniProt</a> , <a href="#">ExpASY</a> )
<b>Gene Symbol:</b>	NRCAM
<b>GeneID:</b>	<a href="#">4897</a>
<b>OMIM:</b>	<a href="#">601581</a>
<b>HGNC:</b>	7994
<b>KEGG:</b>	hsa:4897
<b>Ensembl:</b>	ENSG00000091129
<b>String:</b>	<a href="#">9606.ENSP00000368314</a>
<b>Molecular Weight:</b>	Observed MW: 130-136 kDa
<b>Buffer:</b>	PBS, pH 7.3, with 0.02% sodium azide and 50% glycerol.
<b>Concentration:</b>	2 mg/ml
<b>Note:</b>	This product is for research use only.

For Reference Only