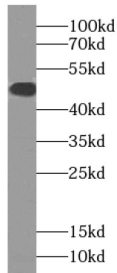


Oct6-Specific Antibody

Catalogue No.: abx235965



WB analysis of HEK-293 cells, using Oct6-Specific antibody (1/800 dilution).

Oct6-Specific Antibody is a Rabbit Polyclonal against Oct6-Specific.

Target:	Oct6-Specific
Clonality:	Polyclonal
Reactivity:	Human, Mouse, Rat
Tested Applications:	ELISA, WB
Host:	Rabbit
Recommended dilutions:	WB: 1/500 - 1/1000. Optimal dilutions/concentrations should be determined by the end user.
Conjugation:	Unconjugated
Immunogen:	POU class 3 homeobox 1
Isotype:	IgG
Form:	Liquid
Purity:	≥ 95% (SDS-PAGE)
Purification:	Purified by immunogen affinity chromatography.
Storage:	Aliquot and store at -20°C. Avoid repeated freeze/thaw cycles.
Validity:	12 months.
UniProt Primary AC:	Q86VW1 (UniProt , ExPASy)

Datasheet

Version: 1.0.0

Revision date: 10 Apr 2025



Gene Symbol: SLC22A16

OMIM: [608276](#)

KEGG: hsa:85413

Molecular Weight: Observed MW: 46 kDa

Buffer: PBS, pH 7.3, with 0.02% sodium azide and 50% glycerol.

Concentration: 2 mg/ml

Note: THIS PRODUCT IS FOR RESEARCH USE ONLY. NOT FOR USE IN DIAGNOSTIC, THERAPEUTIC OR COSMETIC PROCEDURES. NOT FOR HUMAN OR ANIMAL CONSUMPTION.

For Reference Only