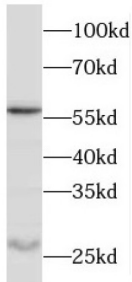
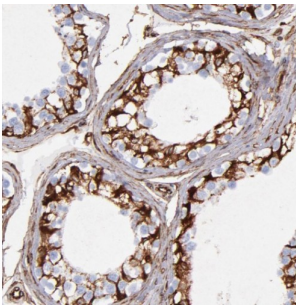


## Outer Dense Fiber of Sperm Tails 1 (ODF1) Antibody

Catalogue No.: abx235970



WB analysis of rat testis tissue, using ODF1 antibody (1/600 dilution).



IHC-P analysis of human testis tissue, using ODF1 Antibody (1/50 dilution).

ODF1 Antibody is a Rabbit Polyclonal against ODF1.

|                               |   |
|-------------------------------|---|
| <b>Target:</b>                | Outer Dense Fiber of Sperm Tails 1 (ODF1)   |
| <b>Clonality:</b>             | Polyclonal  |
| <b>Reactivity:</b>            | Human, Mouse, Rat   |
| <b>Tested Applications:</b>   | ELISA, WB, IHC  |
| <b>Host:</b>                  | Rabbit  |
| <b>Recommended dilutions:</b> | WB: 1/500 - 1/2000, IHC: 1/20 - 1/200. Optimal dilutions/concentrations should be determined by the end user. |
| <b>Conjugation:</b>           | Unconjugated  |
| <b>Immunogen:</b>             | Recombinant human outer dense fiber of sperm tails 1 (ODF1).  |
| <b>Isotype:</b>               | IgG   |
| <b>Form:</b>                  | Liquid  |
| <b>Purity:</b>                | ≥ 95% (SDS-PAGE)  |

# Datasheet

Version: 3.0.0  
Revision date: 25 Mar 2025



|                            |  |
|----------------------------|--|
| <b>Purification:</b>       | Purified by immunogen affinity chromatography.   |
| <b>Storage:</b>            | Aliquot and store at -20°C. Avoid repeated freeze/thaw cycles.   |
| <b>Validity:</b>           | 12 months.   |
| <b>UniProt Primary AC:</b> | Q14990 ( <a href="#">UniProt</a> , <a href="#">ExPASy</a> )  |
| <b>Gene Symbol:</b>        | ODF1   |
| <b>GeneID:</b>             | <a href="#">4956</a>   |
| <b>OMIM:</b>               | <a href="#">182878</a>   |
| <b>HGNC:</b>               | 8113   |
| <b>KEGG:</b>               | hsa:4956   |
| <b>Ensembl:</b>            | ENSG00000155087  |
| <b>String:</b>             | <a href="#">9606.ENSP00000285402</a>   |
| <b>Molecular Weight:</b>   | Observed MW: 28, 56 kDa  |
| <b>Buffer:</b>             | PBS, pH 7.3, with 0.02% sodium azide and 50% glycerol.   |
| <b>Concentration:</b>      | 2 mg/ml  |
| <b>Note:</b>               | THIS PRODUCT IS FOR RESEARCH USE ONLY. NOT FOR USE IN DIAGNOSTIC, THERAPEUTIC OR COSMETIC PROCEDURES. NOT FOR HUMAN OR ANIMAL CONSUMPTION. |

For Reference Only