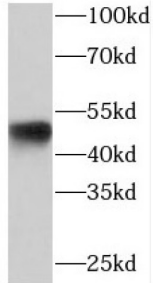
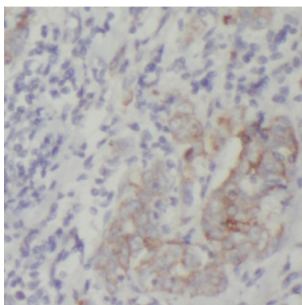


# Protein Kinase C And Casein Kinase Substrate In Neurons Protein 3 (PACSIN3) Antibody

Catalogue No.: abx236102



WB analysis of HeLa cells, using PACSIN3 antibody (1/1000 dilution).



IHC-P analysis of human breast cancer tissue, using PACSIN3 antibody (1/100 dilution).

PACSIN3 Antibody is a Rabbit Polyclonal against PACSIN3.

**Target:** Protein Kinase C And Casein Kinase Substrate In Neurons Protein 3 (PACSIN3)

**Clonality:** Polyclonal

**Reactivity:** Human, Mouse, Rat

**Tested Applications:** ELISA, WB, IHC, IF/ICC, FCM

**Host:** Rabbit

**Recommended dilutions:** WB: 1/500 - 1/2000, IHC: 1/20 - 1/200, IF/ICC: 1/20 - 1/200. Optimal dilutions/concentrations should be determined by the end user.

**Conjugation:** Unconjugated

**Immunogen:** protein kinase C and casein kinase substrate in neurons 3

**Isotype:** IgG

**Form:** Liquid

# Datasheet

Version: 2.0.0  
Revision date: 25 Nov 2024



<b>Purity:</b>	≥ 95% (SDS-PAGE)
<b>Purification:</b>	Purified by immunogen affinity chromatography.
<b>Storage:</b>	Aliquot and store at -20°C. Avoid repeated freeze/thaw cycles.
<b>Validity:</b>	12 months.
<b>UniProt Primary AC:</b>	Q9UKS6 ( <a href="#">UniProt</a> , <a href="#">ExPASy</a> )
<b>Gene Symbol:</b>	PACSIN3
<b>GeneID:</b>	<a href="#">29763</a>
<b>OMIM:</b>	<a href="#">606513</a>
<b>HGNC:</b>	8572
<b>KEGG:</b>	hsa:29763
<b>Ensembl:</b>	ENSG00000165912
<b>String:</b>	<a href="#">9606.ENSP00000440945</a>
<b>Molecular Weight:</b>	Observed MW: 48 kDa
<b>Buffer:</b>	PBS, pH 7.3, with 0.02% sodium azide and 50% glycerol.
<b>Concentration:</b>	2 mg/ml
<b>Note:</b>	This product is for research use only.

For Reference Only