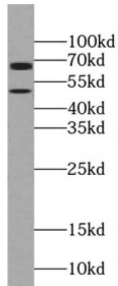
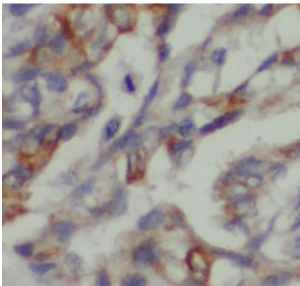


Pantothenate Kinase 2 (PANK2) Antibody

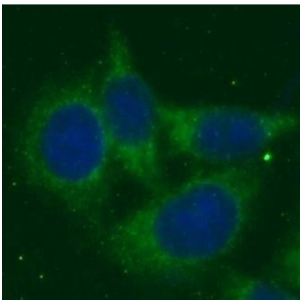
Catalogue No.: abx236134



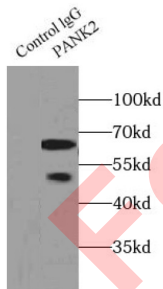
WB analysis of HeLa cells, using PANK2 antibody (1/100 dilution).



IHC-P analysis of human lung cancer tissue, using PANK2 antibody (1/10 dilution).



IF analysis of HepG2 cells, using PANK2 antibody (1/25 dilution) and AF488-conjugated Goat Anti-Rabbit IgG (H+L).



IP analysis of mouse brain tissue lysate (8000 µg), using PANK2 antibody (3 µg, detection: 1/800 dilution).

PANK2 Antibody is a Rabbit Polyclonal against PANK2.

Target: Pantothenate Kinase 2 (PANK2)

Clonality: Polyclonal

Reactivity: Human, Mouse, Rat

Datasheet

Version: 1.0.0
Revision date: 01 Oct 2024



Tested Applications:	ELISA, WB, IHC, IF/ICC, IP
Host:	Rabbit
Recommended dilutions:	WB: 1/500 - 1/1000, IHC: 1/10 - 1/100, IF/ICC: 1/10 - 1/100, IP: 1/500 - 1/1000. Optimal dilutions/concentrations should be determined by the end user.
Conjugation:	Unconjugated
Immunogen:	pantothenate kinase 2
Isotype:	IgG
Form:	Liquid
Purity:	≥ 95% (SDS-PAGE)
Purification:	Purified by immunogen affinity chromatography.
Storage:	Aliquot and store at -20°C. Avoid repeated freeze/thaw cycles.
Validity:	12 months.
UniProt Primary AC:	Q9BZ23 (UniProt , ExPASy)
Gene Symbol:	PANK2
GeneID:	80025
OMIM:	234200
HGNC:	15894
Ensembl:	ENSG00000125779
String:	9606.ENSP00000313377
Molecular Weight:	Observed MW: 50 kDa, 63 kDa
Buffer:	PBS, pH 7.3, with 0.02% sodium azide and 50% glycerol.
Concentration:	2 mg/ml
Note:	This product is for research use only.