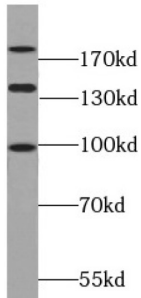
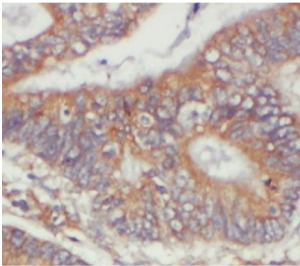


## Par-3 Partitioning Defective 3 Homolog (PARD3) Antibody

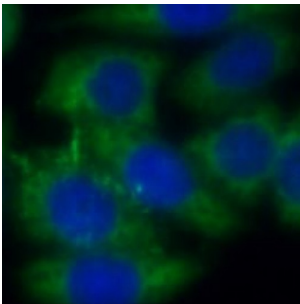
Catalogue No.: abx236146



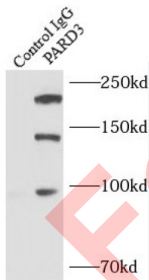
WB analysis of MCF7 cells, using PARD3 antibody (1/500 dilution).



IHC-P analysis of human colon cancer tissue, using PARD3 antibody (1/50 dilution).



IF analysis of fixed MCF-7 cells, using PARD3 antibody (1/50 dilution) and AF488-conjugated Goat Anti-Rabbit IgG (H+L).



IP analysis of MCF-7 cell lysate (2900 µg), using PARD3 antibody (4 µg, detection: 1/200 dilution).

PARD3 Antibody is a Rabbit Polyclonal against PARD3.

**Target:** Par-3 Partitioning Defective 3 Homolog (PARD3)

**Clonality:** Polyclonal

**Reactivity:** Human, Mouse, Rat

# Datasheet

Version: 1.0.0  
Revision date: 31 Dec 2024



|                               |   |
|-------------------------------|---|
| <b>Tested Applications:</b>   | ELISA, WB, IHC, FCM, IP   |
| <b>Host:</b>                  | Rabbit  |
| <b>Recommended dilutions:</b> | WB: 1/500 - 1/1000, IHC: 1/50 - 1/200, IF/ICC: 1/50 - 1/500, IP: 1/200 - 1/1000. Optimal dilutions/concentrations should be determined by the end user. |
| <b>Conjugation:</b>           | Unconjugated  |
| <b>Immunogen:</b>             | Partitioning defective 3 homolog  |
| <b>Isotype:</b>               | IgG   |
| <b>Form:</b>                  | Liquid  |
| <b>Purity:</b>                | ≥ 95% (SDS-PAGE)  |
| <b>Purification:</b>          | Purified by immunogen affinity chromatography.  |
| <b>Storage:</b>               | Aliquot and store at -20°C. Avoid repeated freeze/thaw cycles.  |
| <b>Validity:</b>              | 12 months.  |
| <b>UniProt Primary AC:</b>    | Q8TEW0 ( <a href="#">UniProt</a> , <a href="#">ExPASy</a> )   |
| <b>Gene Symbol:</b>           | PARD3   |
| <b>GeneID:</b>                | <a href="#">56288</a>   |
| <b>OMIM:</b>                  | <a href="#">182940</a>  |
| <b>HGNC:</b>                  | 16051   |
| <b>KEGG:</b>                  | hsa:56288   |
| <b>Ensembl:</b>               | ENSG00000148498   |
| <b>String:</b>                | <a href="#">9606.ENSP00000363921</a>  |
| <b>Molecular Weight:</b>      | Observed MW: 100 kDa, 150 kDa, 180 kDa  |
| <b>Buffer:</b>                | PBS, pH 7.3, with 0.02% sodium azide and 50% glycerol.  |
| <b>Concentration:</b>         | 2 mg/ml   |

# Datasheet

Version: 1.0.0

Revision date: 31 Dec 2024



**Note:** This product is for research use only.

For Reference Only