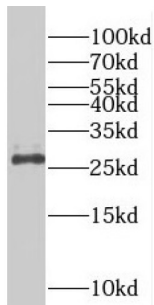
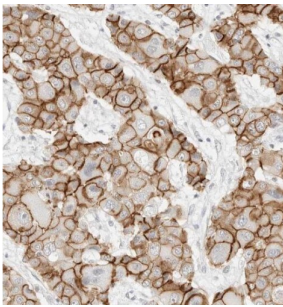


## Programmed Cell Death Protein 10 (PDCD10) Antibody

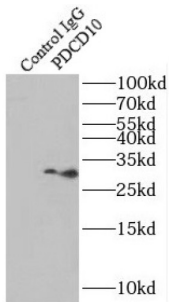
Catalogue No.: abx236237



WB analysis of HeLa cells, using PDCD10 antibody (1/300 dilution).



IHC-P analysis of human liver cancer tissue, using PDCD10 antibody (1/50 dilution).



IP analysis of mouse skeletal muscle tissue lysate (7500 µg), using CCM3/PDCD10 antibody (3 µg, detection: 1/300 dilution).

PDCD10 Antibody is a Rabbit Polyclonal against PDCD10.

**Target:** Programmed Cell Death Protein 10 (PDCD10)

**Clonality:** Polyclonal

**Reactivity:** Human, Mouse, Rat

**Tested Applications:** ELISA, WB, IHC, IP

**Host:** Rabbit

**Recommended dilutions:** WB: 1/200 - 1/1000, IHC: 1/50 - 1/200, IP: 1/200 - 1/1000. Optimal dilutions/concentrations should be determined by the end user.

**Conjugation:** Unconjugated

# Datasheet

Version: 2.0.0  
Revision date: 03 Feb 2025



<b>Immunogen:</b>	programmed cell death 10
<b>Isotype:</b>	IgG
<b>Form:</b>	Liquid
<b>Purity:</b>	≥ 95% (SDS-PAGE)
<b>Purification:</b>	Purified by immunogen affinity chromatography.
<b>Storage:</b>	Aliquot and store at -20°C. Avoid repeated freeze/thaw cycles.
<b>Validity:</b>	12 months.
<b>UniProt Primary AC:</b>	Q9BUL8 ( <a href="#">UniProt</a> , <a href="#">ExPASy</a> )
<b>Gene Symbol:</b>	PDCD10
<b>GeneID:</b>	<a href="#">11235</a>
<b>OMIM:</b>	<a href="#">603285</a>
<b>HGNC:</b>	8761
<b>Ensembl:</b>	ENSG00000114209
<b>String:</b>	<a href="#">9606.ENSP00000376506</a>
<b>Molecular Weight:</b>	Observed MW: 25-30 kDa
<b>Buffer:</b>	PBS, pH 7.3, with 0.02% sodium azide and 50% glycerol.
<b>Concentration:</b>	2 mg/ml
<b>Note:</b>	This product is for research use only.