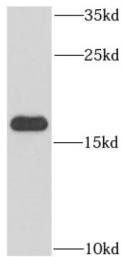
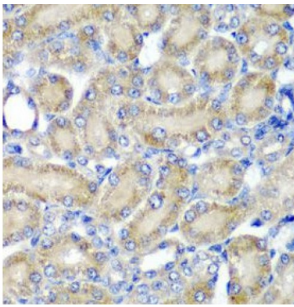


Programmed Cell Death Protein 6 (PDCD6) Antibody

Catalogue No.: abx236242



WB analysis of mouse heart tissue, using PDCD6 antibody (1/1000 dilution).



IHC-P analysis of human stomach cancer tissue, using PDCD6 antibody (1/100 dilution).

PDCD6 Antibody is a Rabbit Polyclonal against PDCD6.

Target: Programmed Cell Death Protein 6 (PDCD6)**Clonality:** Polyclonal**Reactivity:** Human, Mouse, Rat**Tested Applications:** ELISA, WB, IHC**Host:** Rabbit**Recommended dilutions:** WB: 1/200 - 1/2000, IHC: 1/50 - 1/200. Optimal dilutions/concentrations should be determined by the end user.**Conjugation:** Unconjugated**Immunogen:** programmed cell death 6**Isotype:** IgG**Form:** Liquid**Purity:** ≥ 95% (SDS-PAGE)

Datasheet

Version: 2.0.0
Revision date: 11 Jan 2025



Purification:	Purified by immunogen affinity chromatography.
Storage:	Aliquot and store at -20°C. Avoid repeated freeze/thaw cycles.
Validity:	12 months.
UniProt Primary AC:	O75340 (UniProt , ExPASy)
KEGG:	hsa:10016
String:	9606.ENSP00000264933
Molecular Weight:	Observed MW: 16 kDa
Buffer:	PBS, pH 7.3, with 0.02% sodium azide and 50% glycerol.
Concentration:	2 mg/ml
Note:	This product is for research use only.

For Reference Only