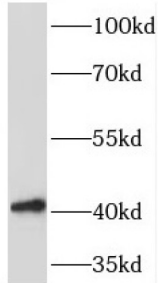
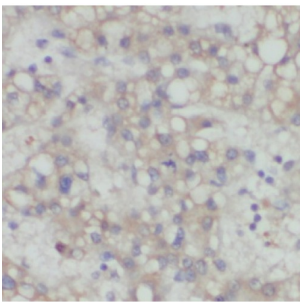


Platelet Derived Growth Factor Receptor Like Protein (PDGFRL) Antibody

Catalogue No.: abx236267



WB analysis of L02 cells, using PDGFRL antibody (1/600 dilution).



IHC-P analysis of human liver cancer tissue, using PDGFRL Antibody (1/50 dilution).

PDGFRL Antibody is a Rabbit Polyclonal against PDGFRL.

Target:	Platelet Derived Growth Factor Receptor Like Protein (PDGFRL)
Clonality:	Polyclonal
Reactivity:	Human, Mouse, Rat
Tested Applications:	ELISA, WB, IHC
Host:	Rabbit
Recommended dilutions:	WB: 1/500 - 1/2000, IHC: 1/20 - 1/200. Optimal dilutions/concentrations should be determined by the end user.
Conjugation:	Unconjugated
Immunogen:	platelet-derived growth factor receptor-like
Isotype:	IgG
Form:	Liquid

Datasheet

Version: 2.0.0
Revision date: 13 Dec 2024



Purity:	≥ 95% (SDS-PAGE)
Purification:	Purified by immunogen affinity chromatography.
Storage:	Aliquot and store at -20°C. Avoid repeated freeze/thaw cycles.
Validity:	12 months.
UniProt Primary AC:	Q15198 (UniProt , ExpASY)
Gene Symbol:	PDGFRL
GeneID:	5157
OMIM:	114500
HGNC:	8805
KEGG:	hsa:5157
Ensembl:	ENSG00000104213
String:	9606.ENSP00000444211
Molecular Weight:	Observed MW: 42 kDa
Buffer:	PBS, pH 7.3, with 0.02% sodium azide and 50% glycerol.
Concentration:	2 mg/ml
Note:	This product is for research use only.

For Reference Only