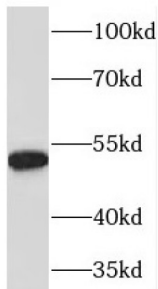
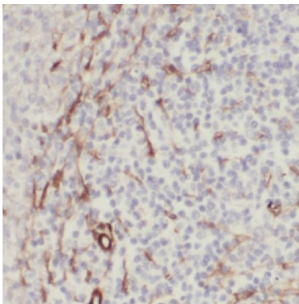


Protein Disulfide Isomerase A6 (PDIA6) Antibody

Catalogue No.: abx236273



WB analysis of HEK-293 cells, using PDIA6 antibody (1/2000 dilution).



IHC-P analysis of human spleen tissue, using PDIA6 antibody (1/50 dilution).

PDIA6 Antibody is a Rabbit Polyclonal against PDIA6.

Target:	Protein Disulfide Isomerase A6 (PDIA6)
Clonality:	Polyclonal
Reactivity:	Human, Mouse, Rat
Tested Applications:	ELISA, WB, IHC, IF/ICC
Host:	Rabbit
Recommended dilutions:	WB: 1/500 - 1/2000, IHC: 1/20 - 1/200, IF/ICC: 1/20 - 1/200. Optimal dilutions/concentrations should be determined by the end user.
Conjugation:	Unconjugated
Immunogen:	protein disulfide isomerase family A, member 6
Isotype:	IgG
Form:	Liquid
Purity:	≥ 95% (SDS-PAGE)

Datasheet

Version: 4.0.0
Revision date: 25 Dec 2024



Purification:	Purified by immunogen affinity chromatography.
Storage:	Aliquot and store at -20°C. Avoid repeated freeze/thaw cycles.
Validity:	12 months.
UniProt Primary AC:	Q15084 (UniProt , ExPASy)
KEGG:	hsa:10130
String:	9606.ENSP00000385385
Molecular Weight:	Observed MW: 48-54 kDa
Buffer:	PBS, pH 7.3, with 0.02% sodium azide and 50% glycerol.
Concentration:	2 mg/ml
Note:	This product is for research use only.

For Reference Only