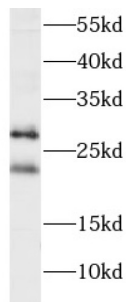


Progesterone Receptor Membrane Component 2 (PGRMC2) Antibody

Catalogue No.: abx236366



WB analysis of HeLa cells, using PGRMC2 antibody (1/1000 dilution).

PGRMC2 Antibody is a Mouse Monoclonal against PGRMC2.

Target:	Progesterone Receptor Membrane Component 2 (PGRMC2)
Clonality:	Monoclonal
Reactivity:	Human, Mouse
Tested Applications:	ELISA, WB
Host:	Mouse
Recommended dilutions:	WB: 1/500 - 1/2000. Optimal dilutions/concentrations should be determined by the end user.
Conjugation:	Unconjugated
Immunogen:	progesterone receptor membrane component 2
Isotype:	IgG ₁
Form:	Liquid
Purity:	≥ 95% (SDS-PAGE)
Purification:	Purified by Protein A and Protein G affinity chromatography.
Storage:	Aliquot and store at -20°C. Avoid repeated freeze/thaw cycles.
Validity:	12 months.
UniProt Primary AC:	O15173 (UniProt , ExPASy)

Datasheet

Version: 2.0.0
Revision date: 24 Dec 2024



Gene Symbol:	PGRMC2
GeneID:	10424
OMIM:	607735
HGNC:	16089
KEGG:	hsa:10424
Ensembl:	ENSG00000164040
String:	9606.ENSP00000429301
Molecular Weight:	Observed MW: 24 kDa, 28 kDa
Buffer:	PBS, pH 7.3, with 0.02% sodium azide and 50% glycerol.
Concentration:	2 mg/ml
Note:	This product is for research use only.

For Reference Only