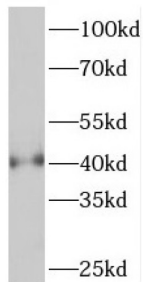
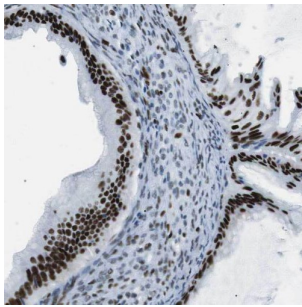


PHD Finger Protein 6 (PHF6) Antibody

Catalogue No.: abx236388



WB analysis of HeLa cells, using PHF6 antibody (1/1000 dilution).



IHC-P analysis of human ovary tumor tissue, using PHF6 antibody (1/50 dilution).

PHF6 Antibody is a Rabbit Polyclonal against PHF6.

Target: PHD Finger Protein 6 (PHF6)

Clonality: Polyclonal

Reactivity: Human, Mouse

Tested Applications: ELISA, WB, IHC

Host: Rabbit

Recommended dilutions: WB: 1/500 - 1/2000, IHC: 1/20 - 1/200. Optimal dilutions/concentrations should be determined by the end user.

Conjugation: Unconjugated

Immunogen: PHD finger protein 6

Isotype: IgG

Form: Liquid

Purity: ≥ 95% (SDS-PAGE)

Datasheet

Version: 3.0.0
Revision date: 11 Mar 2025



Purification:	Purified by immunogen affinity chromatography.
Storage:	Aliquot and store at -20°C. Avoid repeated freeze/thaw cycles.
Validity:	12 months.
UniProt Primary AC:	Q8IWS0 (UniProt , ExpASY)
Gene Symbol:	PHF6
GeneID:	84295
OMIM:	300414
HGNC:	18145
KEGG:	hsa:84295
String:	9606.ENSP00000329097
Molecular Weight:	Observed MW: 41 kDa
Buffer:	PBS, pH 7.3, with 0.02% sodium azide and 50% glycerol.
Concentration:	2 mg/ml
Note:	THIS PRODUCT IS FOR RESEARCH USE ONLY. NOT FOR USE IN DIAGNOSTIC, THERAPEUTIC OR COSMETIC PROCEDURES. NOT FOR HUMAN OR ANIMAL CONSUMPTION.

For Reference Only