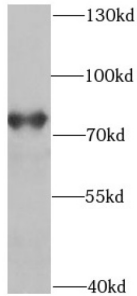
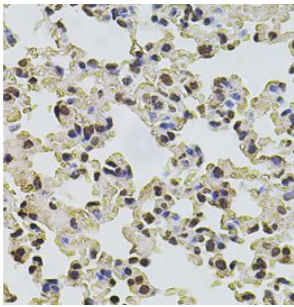


Protection of Telomeres Protein 1 (POT1) Antibody

Catalogue No.: abx236645



WB analysis of HeLa cells, using POT1 antibody (1/1000 dilution).



IHC-P analysis of mouse lung tissue, using POT1 antibody (1/100 dilution).

POT1 Antibody is a Rabbit Polyclonal against POT1.

Target:	Protection of Telomeres Protein 1 (POT1)
Clonality:	Polyclonal
Reactivity:	Human, Mouse, Rat
Tested Applications:	ELISA, WB, IHC, IF/ICC
Host:	Rabbit
Recommended dilutions:	WB: 1/500 - 1/2000, IHC: 1/50 - 1/200, IF/ICC: 1/50 - 1/200. Optimal dilutions/concentrations should be determined by the end user.
Conjugation:	Unconjugated
Immunogen:	POT1 protection of telomeres 1 homolog (S. pombe)
Isotype:	IgG
Form:	Liquid
Purity:	≥ 95% (SDS-PAGE)

Datasheet

Version: 3.0.0
Revision date: 12 Mar 2025



Purification:	Purified by immunogen affinity chromatography.
Storage:	Aliquot and store at -20°C. Avoid repeated freeze/thaw cycles.
Validity:	12 months.
UniProt Primary AC:	Q9NUX5 (UniProt , ExPASy)
String:	9606.ENSP00000350249
Molecular Weight:	Observed MW: 75 kDa
Buffer:	PBS, pH 7.3, with 0.02% sodium azide and 50% glycerol.
Concentration:	2 mg/ml
Note:	THIS PRODUCT IS FOR RESEARCH USE ONLY. NOT FOR USE IN DIAGNOSTIC, THERAPEUTIC OR COSMETIC PROCEDURES. NOT FOR HUMAN OR ANIMAL CONSUMPTION.

For Reference Only