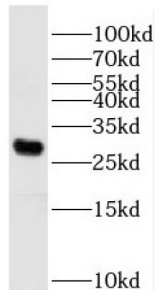


## Phosphatidic Acid Phosphatase Type 2 Domain-Containing Protein 3 (PPAPDC3) Antibody

Catalogue No.: abx236659



WB analysis of mouse skeletal muscle tissue, using PPAPDC3 antibody (1/800 dilution).

PPAPDC3 Antibody is a Rabbit Polyclonal against PPAPDC3.

<b>Target:</b>	Phosphatidic Acid Phosphatase Type 2 Domain-Containing Protein 3 (PPAPDC3)
<b>Clonality:</b>	Polyclonal
<b>Reactivity:</b>	Human, Mouse, Rat
<b>Tested Applications:</b>	ELISA, WB
<b>Host:</b>	Rabbit
<b>Recommended dilutions:</b>	WB: 1/500 - 1/2000. Optimal dilutions/concentrations should be determined by the end user.
<b>Conjugation:</b>	Unconjugated
<b>Immunogen:</b>	phosphatidic acid phosphatase type 2 domain containing 3
<b>Isotype:</b>	IgG
<b>Form:</b>	Liquid
<b>Purity:</b>	≥ 95% (SDS-PAGE)
<b>Purification:</b>	Purified by immunogen affinity chromatography.
<b>Storage:</b>	Aliquot and store at -20°C. Avoid repeated freeze/thaw cycles.
<b>Validity:</b>	12 months.

# Datasheet

Version: 1.0.0  
Revision date: 04 Oct 2024

<b>UniProt Primary AC:</b>	Q8NBV4 ( <a href="#">UniProt</a> , <a href="#">ExPASy</a> )
<b>Gene Symbol:</b>	PLPP7
<b>GeneID:</b>	<a href="#">84814</a>
<b>HGNC:</b>	28174
<b>KEGG:</b>	hsa:84814
<b>Ensembl:</b>	ENSG00000160539
<b>String:</b>	<a href="#">9606.ENSP00000361338</a>
<b>Molecular Weight:</b>	Observed MW: 29 kDa
<b>Buffer:</b>	PBS, pH 7.3, with 0.02% sodium azide and 50% glycerol.
<b>Concentration:</b>	2 mg/ml
<b>Note:</b>	This product is for research use only.

For Reference Only