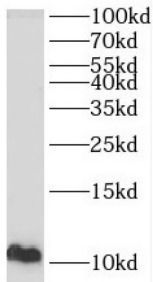
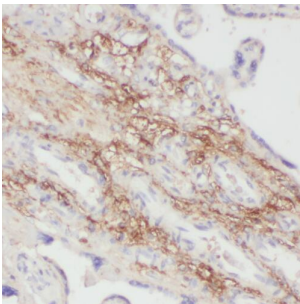


PPBP,NAP2 Antibody

Catalogue No.: abx236668



WB analysis of mouse liver tissue, using PPBP antibody (1/300 dilution).



IHC-P analysis of human placenta tissue, using PPBP Antibody (1/50 dilution).

PPBP,NAP2 Antibody is a Rabbit Polyclonal against PPBP,NAP2.

Target:	PPBP,NAP2
Clonality:	Polyclonal
Reactivity:	Human, Mouse
Tested Applications:	ELISA, WB, IHC
Host:	Rabbit
Recommended dilutions:	WB: 1/500 - 1/2000, IHC: 1/20 - 1/200. Optimal dilutions/concentrations should be determined by the end user.
Conjugation:	Unconjugated
Immunogen:	pro-platelet basic protein(chemokine(C-X-C motif) ligand 7)
Isotype:	IgG
Form:	Liquid
Purity:	≥ 95% (SDS-PAGE)

Datasheet

Version: 1.0.0
Revision date: 06 Apr 2025



Purification:	Purified by immunogen affinity chromatography.
Storage:	Aliquot and store at -20°C. Avoid repeated freeze/thaw cycles.
Validity:	12 months.
UniProt Primary AC:	P02775 (UniProt , ExpASY)
KEGG:	hsa:5473
String:	9606.ENSP00000296028
Molecular Weight:	Observed MW: 8-14 kDa
Buffer:	PBS, pH 7.3, with 0.02% sodium azide and 50% glycerol.
Concentration:	2 mg/ml
Note:	THIS PRODUCT IS FOR RESEARCH USE ONLY. NOT FOR USE IN DIAGNOSTIC, THERAPEUTIC OR COSMETIC PROCEDURES. NOT FOR HUMAN OR ANIMAL CONSUMPTION.

For Reference Only