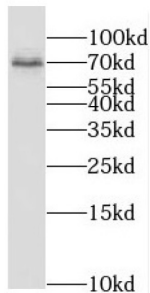


Datasheet

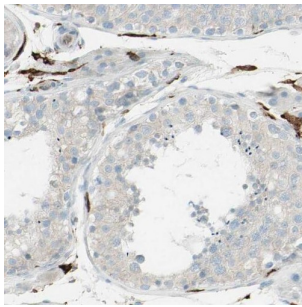
Version: 1.0.0
Revision date: 15 Nov 2024

Protein Phosphatase, Mg²⁺/Mn²⁺ Dependent 1G (PPM1G) Antibody

Catalogue No.: abx236687



WB analysis of mouse lung tissue, using PPM1G antibody (1/800 dilution).



IHC-P analysis of human testis tissue, using PPM1G antibody (1/100 dilution).

PPM1G Antibody is a Rabbit Polyclonal against PPM1G.

Target:	Protein Phosphatase, Mg ²⁺ /Mn ²⁺ Dependent 1G (PPM1G)
Clonality:	Polyclonal
Reactivity:	Human, Mouse, Rat
Tested Applications:	ELISA, WB, IHC
Host:	Rabbit
Recommended dilutions:	WB: 1/500 - 1/2000, IHC: 1/20 - 1/200. Optimal dilutions/concentrations should be determined by the end user.
Conjugation:	Unconjugated
Immunogen:	protein phosphatase 1G(formerly 2C), magnesium-dependent, gamma isoform
Isotype:	IgG
Form:	Liquid
Purity:	≥ 95% (SDS-PAGE)

Datasheet

Version: 1.0.0
Revision date: 15 Nov 2024



Purification:	Purified by immunogen affinity chromatography.
Storage:	Aliquot and store at -20°C. Avoid repeated freeze/thaw cycles.
Validity:	12 months.
UniProt Primary AC:	O15355 (UniProt , ExPASy)
Gene Symbol:	PPM1G
GeneID:	5496
OMIM:	605119
HGNC:	9278
KEGG:	hsa:5496
Ensembl:	ENSG00000115241
String:	9606.ENSP00000342778
Molecular Weight:	Observed MW: 70 kDa
Buffer:	PBS, pH 7.3, with 0.02% sodium azide and 50% glycerol.
Concentration:	2 mg/ml
Note:	This product is for research use only.

For Reference Only