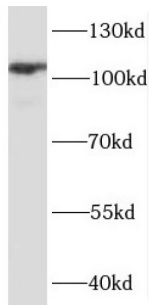


Protein Phosphatase 1 Regulatory Subunit 12B (PPP1R12B) Antibody

Catalogue No.: abx236700



WB analysis of mouse heart tissue, using PPP1R12B antibody (1/10000 dilution).

PPP1R12B Antibody is a Rabbit Polyclonal against PPP1R12B.

Target:	Protein Phosphatase 1 Regulatory Subunit 12B (PPP1R12B)
Clonality:	Polyclonal
Reactivity:	Human, Mouse, Rat
Tested Applications:	ELISA, WB
Host:	Rabbit
Recommended dilutions:	WB: 1/500 - 1/2000. Optimal dilutions/concentrations should be determined by the end user.
Conjugation:	Unconjugated
Immunogen:	protein phosphatase 1, regulatory(inhibitor) subunit 12B
Isotype:	IgG
Form:	Liquid
Purity:	≥ 95% (SDS-PAGE)
Purification:	Purified by immunogen affinity chromatography.
Storage:	Aliquot and store at -20°C. Avoid repeated freeze/thaw cycles.
Validity:	12 months.
UniProt Primary AC:	O60237 (UniProt , ExPASy)

Datasheet

Version: 5.0.0
Revision date: 12 Feb 2025



Gene Symbol: PPP1R12B

GeneID: [4660](#)

OMIM: [603768](#)

HGNC: 7619

KEGG: hsa:4660

Ensembl: ENSG00000077157

String: [9606.ENSP00000476755](#)

Molecular Weight: Observed MW: 110 kDa

Buffer: PBS, pH 7.3, with 0.02% sodium azide and 50% glycerol.

Concentration: 2 mg/ml

Note: This product is for research use only.

For Reference Only