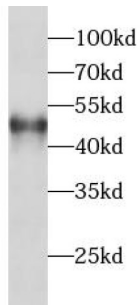
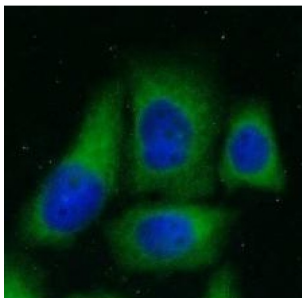


Protein Phosphatase 2 Regulatory Subunit B Beta (PPP2R2B) Antibody

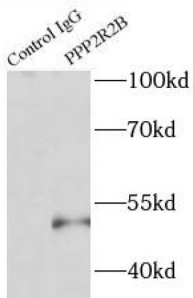
Catalogue No.: abx236717



WB analysis of MCF7 cells, using PPP2R2B antibody (1/500 dilution).



IF analysis of HeLa cells, using PPP2R2B antibody (1/25 dilution) and AF488-conjugated Goat Anti-Rabbit IgG (H+L).



IP analysis of SH-SY5Y cell lysate (2000 µg), using PPP2R2B antibody (4 µg, detection: 1/500 dilution).

PPP2R2B Antibody is a Rabbit Polyclonal against PPP2R2B.

Target: Protein Phosphatase 2 Regulatory Subunit B Beta (PPP2R2B)

Clonality: Polyclonal

Reactivity: Human, Mouse, Rat

Tested Applications: ELISA, WB, IF/ICC, IP

Host: Rabbit

Recommended dilutions: WB: 1/500 - 1/1000, IF/ICC: 1/10 - 1/100, IP: 1/500 - 1/1000. Optimal dilutions/concentrations should be determined by the end user.

Conjugation: Unconjugated

Datasheet

Version: 3.0.0
Revision date: 14 Apr 2025



Immunogen:	protein phosphatase 2(formerly 2A), regulatory subunit B, beta isoform
Isotype:	IgG
Form:	Liquid
Purity:	≥ 95% (SDS-PAGE)
Purification:	Purified by immunogen affinity chromatography.
Storage:	Aliquot and store at -20°C. Avoid repeated freeze/thaw cycles.
Validity:	12 months.
UniProt Primary AC:	Q00005 (UniProt , ExPASy)
Gene Symbol:	PPP2R2B
GeneID:	5521
OMIM:	604325
HGNC:	9305
KEGG:	hsa:5521
Ensembl:	ENSG00000156475
String:	9606.ENSP00000377936
Molecular Weight:	Observed MW: 52 kDa
Buffer:	PBS, pH 7.3, with 0.02% sodium azide and 50% glycerol.
Concentration:	2 mg/ml
Note:	THIS PRODUCT IS FOR RESEARCH USE ONLY. NOT FOR USE IN DIAGNOSTIC, THERAPEUTIC OR COSMETIC PROCEDURES. NOT FOR HUMAN OR ANIMAL CONSUMPTION.