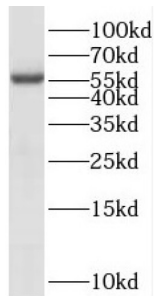


## Protein Phosphatase 3 Catalytic Subunit Gamma (PPP3CC) Antibody

Catalogue No.: abx236730



WB analysis of mouse testis tissue, using PPP3CC antibody (1/500 dilution).

PPP3CC Antibody is a Rabbit Polyclonal against PPP3CC.

<b>Target:</b>	Protein Phosphatase 3 Catalytic Subunit Gamma (PPP3CC)
<b>Clonality:</b>	Polyclonal
<b>Reactivity:</b>	Human, Mouse
<b>Tested Applications:</b>	ELISA, WB
<b>Host:</b>	Rabbit
<b>Recommended dilutions:</b>	WB: 1/500 - 1/2000. Optimal dilutions/concentrations should be determined by the end user.
<b>Conjugation:</b>	Unconjugated
<b>Immunogen:</b>	protein phosphatase 3(formerly 2B), catalytic subunit, gamma isoform
<b>Isotype:</b>	IgG
<b>Form:</b>	Liquid
<b>Purity:</b>	≥ 95% (SDS-PAGE)
<b>Purification:</b>	Purified by immunogen affinity chromatography.
<b>Storage:</b>	Aliquot and store at -20°C. Avoid repeated freeze/thaw cycles.
<b>Validity:</b>	12 months.
<b>UniProt Primary AC:</b>	P48454 ( <a href="#">UniProt</a> , <a href="#">ExpASY</a> )

# Datasheet

Version: 1.0.0  
Revision date: 15 Nov 2024



<b>Gene Symbol:</b>	PPP3CC
<b>GeneID:</b>	<a href="#">5533</a>
<b>OMIM:</b>	<a href="#">114107</a>
<b>HGNC:</b>	9316
<b>KEGG:</b>	hsa:5533
<b>Ensembl:</b>	ENSG00000120910
<b>String:</b>	<a href="#">9606.ENSP00000380878</a>
<b>Molecular Weight:</b>	Observed MW: 57 kDa
<b>Buffer:</b>	PBS, pH 7.3, with 0.02% sodium azide and 50% glycerol.
<b>Concentration:</b>	2 mg/ml
<b>Note:</b>	This product is for research use only.

For Reference Only