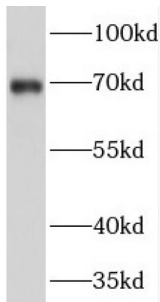
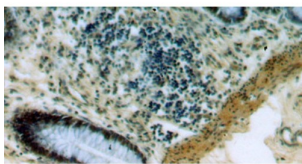


Prickle Planar Cell Polarity Protein 3 (PRICKLE3) Antibody

Catalogue No.: abx236775



WB analysis of Jurkat cells, using PRICKLE3 antibody (1/500 dilution).



IHC-P analysis of human colon tissue, using PRICKLE3 antibody (1/50 dilution).

PRICKLE3 Antibody is a Rabbit Polyclonal against PRICKLE3.

Target:	Prickle Planar Cell Polarity Protein 3 (PRICKLE3)
Clonality:	Polyclonal
Reactivity:	Human, Mouse, Rat
Tested Applications:	ELISA, WB, IHC
Host:	Rabbit
Recommended dilutions:	WB: 1/500 - 1/2000, IHC: 1/20 - 1/200. Optimal dilutions/concentrations should be determined by the end user.
Conjugation:	Unconjugated
Immunogen:	prickle homolog 3(Drosophila)
Isotype:	IgG
Form:	Liquid
Purity:	≥ 95% (SDS-PAGE)

Datasheet

Version: 2.0.0
Revision date: 26 Dec 2024



Purification:	Purified by immunogen affinity chromatography.
Storage:	Aliquot and store at -20°C. Avoid repeated freeze/thaw cycles.
Validity:	12 months.
UniProt Primary AC:	O43900 (UniProt , ExPASy)
Gene Symbol:	PRICKLE3
GeneID:	4007
OMIM:	300111
HGNC:	6645
KEGG:	hsa:4007
Ensembl:	ENSG00000012211
String:	9606.ENSP00000470248
Molecular Weight:	Observed MW: 69 kDa
Buffer:	PBS, pH 7.3, with 0.02% sodium azide and 50% glycerol.
Concentration:	2 mg/ml
Note:	This product is for research use only.

For Reference Only