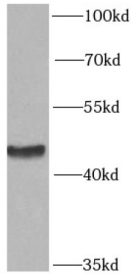
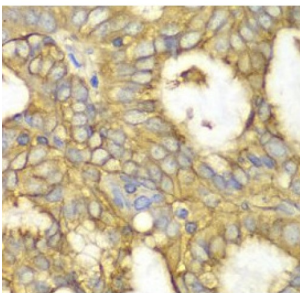


CAMP-Dependent Protein Kinase Type I-Alpha Regulatory Subunit (PRKAR1A) Antibody

Catalogue No.: abx236779



WB analysis of HeLa cells, using PRKAR1A antibody (1/1000 dilution).



IHC-P analysis of human oophoroma tissue, using PRKAR1A antibody (1/100 dilution).

PRKAR1A Antibody is a Rabbit Polyclonal against PRKAR1A.

Target:	CAMP-Dependent Protein Kinase Type I-Alpha Regulatory Subunit (PRKAR1A)
Clonality:	Polyclonal
Reactivity:	Human
Tested Applications:	ELISA, WB, IHC
Host:	Rabbit
Recommended dilutions:	WB: 1/500 - 1/2000, IHC: 1/50 - 1/200. Optimal dilutions/concentrations should be determined by the end user.
Conjugation:	Unconjugated
Immunogen:	protein kinase, cAMP-dependent, regulatory, type I, alpha (tissue specific extinguisher 1)
Isotype:	IgG
Form:	Liquid

Datasheet

Version: 2.0.0
Revision date: 13 Jan 2025



Purity:	≥ 95% (SDS-PAGE)
Purification:	Purified by immunogen affinity chromatography.
Storage:	Aliquot and store at -20°C. Avoid repeated freeze/thaw cycles.
Validity:	12 months.
UniProt Primary AC:	P10644 (UniProt , ExPASy)
KEGG:	hsa:5573
String:	9606.ENSP00000376475
Molecular Weight:	Observed MW: 45 kDa
Buffer:	PBS, pH 7.3, with 0.02% sodium azide and 50% glycerol.
Concentration:	2 mg/ml
Note:	This product is for research use only.

For Reference Only