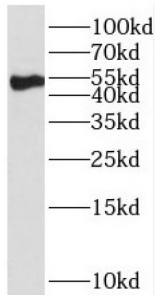


Protein C (PROC) Antibody

Catalogue No.: abx236795



WB analysis of mouse liver tissue, using PROC antibody (1/1000 dilution).

PROC Antibody is a Rabbit Polyclonal against PROC.

Target:	Protein C (PROC)
Clonality:	Polyclonal
Reactivity:	Human, Mouse
Tested Applications:	ELISA, WB
Host:	Rabbit
Recommended dilutions:	WB: 1/500 - 1/2000. Optimal dilutions/concentrations should be determined by the end user.
Conjugation:	Unconjugated
Immunogen:	protein C(inactivator of coagulation factors Va and VIIIa)
Isotype:	IgG
Form:	Liquid
Purity:	≥ 95% (SDS-PAGE)
Purification:	Purified by immunogen affinity chromatography.
Storage:	Aliquot and store at -20°C. Avoid repeated freeze/thaw cycles.
Validity:	12 months.
UniProt Primary AC:	P04070 (UniProt , ExpASY)

Datasheet

Version: 3.0.0

Revision date: 31 Dec 2024



KEGG: hsa:5624

String: [9606.ENSP00000234071](#)

Molecular Weight: Observed MW: 52 kDa

Buffer: PBS, pH 7.3, with 0.02% sodium azide and 50% glycerol.

Concentration: 2 mg/ml

Note: This product is for research use only.

For Reference Only