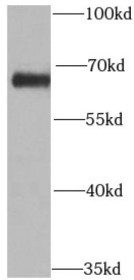


Datasheet

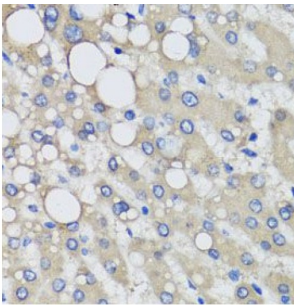
Version: 1.0.0
Revision date: 23 Dec 2024

Proline Dehydrogenase 1, Mitochondrial (PRODH) Antibody

Catalogue No.: abx236796



WB analysis of mouse liver tissue, using PRODH antibody (1/1000 dilution).



IHC-P analysis of human liver injury tissue, using PRODH Antibody (1/50 dilution).

PRODH Antibody is a Rabbit Polyclonal against PRODH.

Target:	Proline Dehydrogenase 1, Mitochondrial (PRODH)
Clonality:	Polyclonal
Reactivity:	Human, Mouse
Tested Applications:	ELISA, WB, IHC
Host:	Rabbit
Recommended dilutions:	WB: 1/500 - 1/2000, IHC: 1/50 - 1/100. Optimal dilutions/concentrations should be determined by the end user.
Conjugation:	Unconjugated
Immunogen:	proline dehydrogenase (oxidase) 1
Isotype:	IgG
Form:	Liquid
Purity:	≥ 95% (SDS-PAGE)

Datasheet

Version: 1.0.0
Revision date: 23 Dec 2024



Purification:	Purified by immunogen affinity chromatography.
Storage:	Aliquot and store at -20°C. Avoid repeated freeze/thaw cycles.
Validity:	12 months.
UniProt Primary AC:	O43272 (UniProt , ExPASy)
KEGG:	hsa:5625
String:	9606.ENSP00000481127
Molecular Weight:	Observed MW: 68 kDa
Buffer:	PBS, pH 7.3, with 0.02% sodium azide and 50% glycerol.
Concentration:	2 mg/ml
Note:	This product is for research use only.

For Reference Only