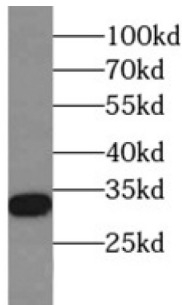
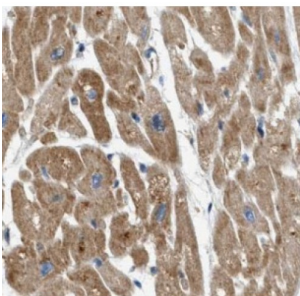


prohibitin 2 (PHB2) Antibody

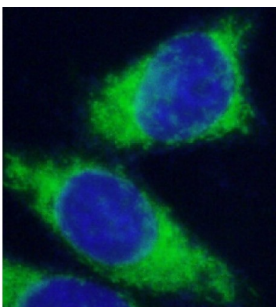
Catalogue No.: abx236801



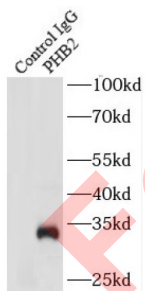
WB analysis of NIH/3T3 cells, using PHB2 antibody (1/4000 dilution).



IHC-P analysis of human heart tissue, using PHB2 Antibody (1/200 dilution).



IF analysis of -20 °C ethanol-fixed HepG2 cells, using PHB2 antibody (1/50 dilution) and AF488-conjugated Goat Anti-Rabbit IgG (H+L).



IP analysis of HeLa cell lysate (1840 µg), using Prohibitin 2 antibody (3 µg, detection: 1/1000 dilution).

prohibitin 2 Antibody is a Rabbit Polyclonal against prohibitin 2.

Target: prohibitin 2 (PHB2)

Clonality: Polyclonal

Reactivity: Human, Mouse, Rat

Datasheet

Version: 2.0.0
Revision date: 05 Mar 2025



Tested Applications:	ELISA, WB, IHC, IF/ICC, IP
Host:	Rabbit
Recommended dilutions:	WB: 1/1000 - 1/8000, IHC: 1/50 - 1/500, IF/ICC: 1/50 - 1/500, IP: 1/500 - 1/2000. Optimal dilutions/concentrations should be determined by the end user.
Conjugation:	Unconjugated
Immunogen:	prohibitin 2
Isotype:	IgG
Form:	Liquid
Purity:	≥ 95% (SDS-PAGE)
Purification:	Purified by immunogen affinity chromatography.
Storage:	Aliquot and store at -20°C. Avoid repeated freeze/thaw cycles.
Validity:	12 months.
UniProt Primary AC:	Q99623 (UniProt , ExPASy)
Gene Symbol:	PHB2
GeneID:	11331
OMIM:	610704
HGNC:	30306
KEGG:	hsa:11331
Ensembl:	ENSG00000215021
String:	9606.ENSP00000441875
Molecular Weight:	Observed MW: 33 kDa
Buffer:	PBS, pH 7.3, with 0.02% sodium azide and 50% glycerol.
Concentration:	2 mg/ml

Datasheet

Version: 2.0.0

Revision date: 05 Mar 2025



Note:

THIS PRODUCT IS FOR RESEARCH USE ONLY. NOT FOR USE IN DIAGNOSTIC, THERAPEUTIC OR COSMETIC PROCEDURES. NOT FOR HUMAN OR ANIMAL CONSUMPTION.

For Reference Only