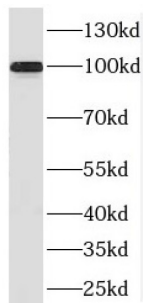
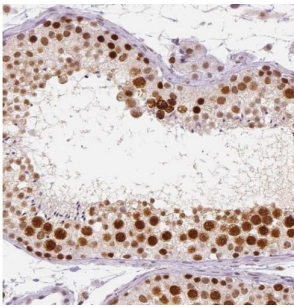


## Pre-mRNA Processing Factor 6 (PRPF6) Antibody

Catalogue No.: abx236820



WB analysis of HEK-293 cells, using PRPF6 antibody (1/1000 dilution).



IHC-P analysis of human testis tissue, using PRPF6 Antibody (1/50 dilution).

PRPF6 Antibody is a Rabbit Polyclonal against PRPF6.

<b>Target:</b>	Pre-mRNA Processing Factor 6 (PRPF6)
<b>Clonality:</b>	Polyclonal
<b>Reactivity:</b>	Human, Mouse
<b>Tested Applications:</b>	ELISA, WB, IHC
<b>Host:</b>	Rabbit
<b>Recommended dilutions:</b>	WB: 1/500 - 1/2000, IHC: 1/20 - 1/200. Optimal dilutions/concentrations should be determined by the end user.
<b>Conjugation:</b>	Unconjugated
<b>Immunogen:</b>	PRP6 pre-mRNA processing factor 6 homolog(S. cerevisiae)
<b>Isotype:</b>	IgG
<b>Form:</b>	Liquid
<b>Purity:</b>	≥ 95% (SDS-PAGE)

# Datasheet

Version: 6.0.0  
Revision date: 17 Mar 2025



<b>Purification:</b>	Purified by immunogen affinity chromatography.
<b>Storage:</b>	Aliquot and store at -20°C. Avoid repeated freeze/thaw cycles.
<b>Validity:</b>	12 months.
<b>UniProt Primary AC:</b>	O94906 ( <a href="#">UniProt</a> , <a href="#">ExPASy</a> )
<b>Gene Symbol:</b>	PRPF6
<b>GeneID:</b>	<a href="#">24148</a>
<b>OMIM:</b>	<a href="#">613979</a>
<b>HGNC:</b>	15860
<b>KEGG:</b>	hsa:24148
<b>Ensembl:</b>	ENSG00000101161
<b>String:</b>	<a href="#">9606.ENSP00000266079</a>
<b>Molecular Weight:</b>	Observed MW: 100 kDa
<b>Buffer:</b>	PBS, pH 7.3, with 0.02% sodium azide and 50% glycerol.
<b>Concentration:</b>	2 mg/ml
<b>Note:</b>	THIS PRODUCT IS FOR RESEARCH USE ONLY. NOT FOR USE IN DIAGNOSTIC, THERAPEUTIC OR COSMETIC PROCEDURES. NOT FOR HUMAN OR ANIMAL CONSUMPTION.

For Reference Only