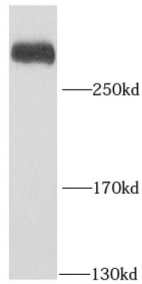
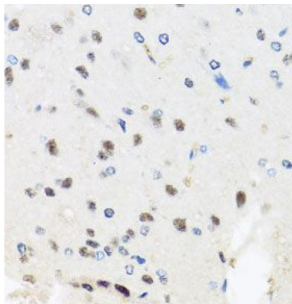


Pre-mRNA Processing Factor 8 (PRPF8) Antibody

Catalogue No.: abx236821



WB analysis of HeLa cells, using PRPF8 antibody (1/1000 dilution).



IHC-P analysis of rat brain tissue, using PRPF8 Antibody (1/100 dilution).

PRPF8 Antibody is a Rabbit Polyclonal against PRPF8.

Target:	Pre-mRNA Processing Factor 8 (PRPF8)
Clonality:	Polyclonal
Reactivity:	Human, Mouse, Rat
Tested Applications:	ELISA, WB, IHC
Host:	Rabbit
Recommended dilutions:	WB: 1/500 - 1/1000, IHC: 1/50 - 1/100. Optimal dilutions/concentrations should be determined by the end user.
Conjugation:	Unconjugated
Immunogen:	PRP8 pre-mRNA processing factor 8 homolog (<i>S. cerevisiae</i>)
Isotype:	IgG
Form:	Liquid
Purity:	≥ 95% (SDS-PAGE)

Datasheet

Version: 3.0.0
Revision date: 23 Mar 2025



Purification:	Purified by immunogen affinity chromatography.
Storage:	Aliquot and store at -20°C. Avoid repeated freeze/thaw cycles.
Validity:	12 months.
UniProt Primary AC:	Q6P2Q9 (UniProt , ExpASY)
KEGG:	hsa:10594
String:	9606.ENSP00000460348
Molecular Weight:	Observed MW: 274 kDa
Buffer:	PBS, pH 7.3, with 0.02% sodium azide and 50% glycerol.
Concentration:	2 mg/ml
Note:	THIS PRODUCT IS FOR RESEARCH USE ONLY. NOT FOR USE IN DIAGNOSTIC, THERAPEUTIC OR COSMETIC PROCEDURES. NOT FOR HUMAN OR ANIMAL CONSUMPTION.

For Reference Only