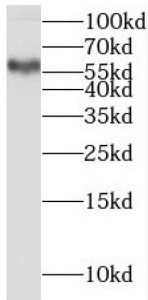


Prosaposin-Like 1 (PSAPL1) Antibody

Catalogue No.: abx236845



WB analysis of human testis tissue, using PSAPL1 antibody (1/200 dilution).

PSAPL1 Antibody is a Rabbit Polyclonal against PSAPL1.

| | |
|-------------------------------|--|
| Target: | Prosaposin-Like 1 (PSAPL1) |
| Clonality: | Polyclonal |
| Reactivity: | Human |
| Tested Applications: | ELISA, WB |
| Host: | Rabbit |
| Recommended dilutions: | WB: 1/500 - 1/2000. Optimal dilutions/concentrations should be determined by the end user. |
| Conjugation: | Unconjugated |
| Immunogen: | prosaposin-like 1 |
| Isotype: | IgG |
| Form: | Liquid |
| Purity: | ≥ 95% (SDS-PAGE) |
| Purification: | Purified by immunogen affinity chromatography. |
| Storage: | Aliquot and store at -20°C. Avoid repeated freeze/thaw cycles. |
| Validity: | 12 months. |
| UniProt Primary AC: | Q6NUJ1 (UniProt , ExPASy) |

Datasheet

Version: 2.0.0
Revision date: 23 Dec 2024



| | |
|--------------------------|--|
| Gene Symbol: | PSAPL1 |
| GeneID: | 768239 |
| HGNC: | 33131 |
| KEGG: | hsa:768239 |
| Ensembl: | ENSG00000178597 |
| String: | 9606.ENSP00000317445 |
| Molecular Weight: | Observed MW: 57-63 kDa |
| Buffer: | PBS, pH 7.3, with 0.02% sodium azide and 50% glycerol. |
| Concentration: | 2 mg/ml |
| Note: | This product is for research use only. |

For Reference Only