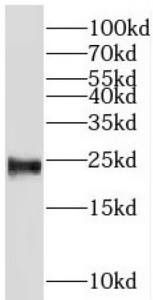
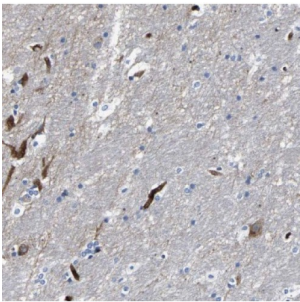


Pregnancy Specific Beta-1-Glycoprotein 11 (PSG11) Antibody

Catalogue No.: abx236856



WB analysis of mouse uterus tissue, using PSG11 antibody (1/600 dilution).



IHC-P analysis of human brain tissue, using PSG11 antibody (1/100 dilution).

PSG11 Antibody is a Rabbit Polyclonal against PSG11.

Target:	Pregnancy Specific Beta-1-Glycoprotein 11 (PSG11)
Clonality:	Polyclonal
Reactivity:	Human, Mouse
Tested Applications:	ELISA, WB, IHC
Host:	Rabbit
Recommended dilutions:	WB: 1/500 - 1/2000, IHC: 1/20 - 1/200. Optimal dilutions/concentrations should be determined by the end user.
Conjugation:	Unconjugated
Immunogen:	pregnancy specific beta-1-glycoprotein 11
Isotype:	IgG
Form:	Liquid
Purity:	≥ 95% (SDS-PAGE)

Datasheet

Version: 3.0.0
Revision date: 26 Dec 2024



Purification:	Purified by immunogen affinity chromatography.
Storage:	Aliquot and store at -20°C. Avoid repeated freeze/thaw cycles.
Validity:	12 months.
UniProt Primary AC:	Q9UQ72 (UniProt , ExPASy)
Gene Symbol:	PSG11
GeneID:	5680
OMIM:	176401
NCBI Accession:	NP_001106881.1, NM_001113410.1, NP_002776.3, NM_002785.2
String:	9606.ENSP00000319140
Molecular Weight:	Observed MW: 24 kDa
Buffer:	PBS, pH 7.3, with 0.02% sodium azide and 50% glycerol.
Concentration:	2 mg/ml
Note:	This product is for research use only.

For Reference Only