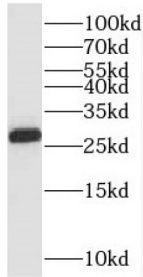
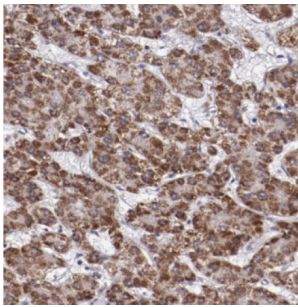


Proteasome Subunit Alpha Type 3 (PSMA3) Antibody

Catalogue No.: abx236863



WB analysis of human lung tissue, using PSMA3 antibody (1/400 dilution).



IHC-P analysis of human liver cancer tissue, using PSMA3 antibody (1/50 dilution).

PSMA3 Antibody is a Rabbit Polyclonal against PSMA3.

Target:	Proteasome Subunit Alpha Type 3 (PSMA3)
Clonality:	Polyclonal
Reactivity:	Human, Mouse, Rat
Tested Applications:	ELISA, WB, IHC
Host:	Rabbit
Recommended dilutions:	WB: 1/500 - 1/2000, IHC: 1/20 - 1/200. Optimal dilutions/concentrations should be determined by the end user.
Conjugation:	Unconjugated
Immunogen:	proteasome(prosome, macropain) subunit, alpha type, 3
Isotype:	IgG
Form:	Liquid
Purity:	≥ 95% (SDS-PAGE)

Datasheet

Version: 4.0.0
Revision date: 31 Dec 2024



Purification:	Purified by immunogen affinity chromatography.
Storage:	Aliquot and store at -20°C. Avoid repeated freeze/thaw cycles.
Validity:	12 months.
UniProt Primary AC:	P25788 (UniProt , ExPASy)
Gene Symbol:	PSMA3
GeneID:	5684
OMIM:	176843
HGNC:	9532
KEGG:	hsa:5684
Ensembl:	ENSG00000100567
String:	9606.ENSP00000216455
Molecular Weight:	Observed MW: 28 kDa
Buffer:	PBS, pH 7.3, with 0.02% sodium azide and 50% glycerol.
Concentration:	2 mg/ml
Note:	This product is for research use only.

For Reference Only