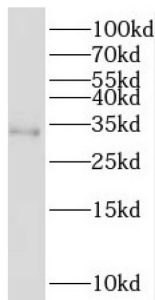


## Proteasome Subunit Beta Type 11 (PSMB11) Antibody

Catalogue No.: abx236870



WB analysis of Jurkat cells, using PSMB11 antibody (1/300 dilution).

PSMB11 Antibody is a Rabbit Polyclonal against PSMB11.

<b>Target:</b>	Proteasome Subunit Beta Type 11 (PSMB11)
<b>Clonality:</b>	Polyclonal
<b>Reactivity:</b>	Human, Mouse
<b>Tested Applications:</b>	ELISA, WB
<b>Host:</b>	Rabbit
<b>Recommended dilutions:</b>	WB: 1/500 - 1/2000. Optimal dilutions/concentrations should be determined by the end user.
<b>Conjugation:</b>	Unconjugated
<b>Immunogen:</b>	proteasome(prosome, macropain) subunit, beta type, 11
<b>Isotype:</b>	IgG
<b>Form:</b>	Liquid
<b>Purity:</b>	≥ 95% (SDS-PAGE)
<b>Purification:</b>	Purified by immunogen affinity chromatography.
<b>Storage:</b>	Aliquot and store at -20°C. Avoid repeated freeze/thaw cycles.
<b>Validity:</b>	12 months.
<b>UniProt Primary AC:</b>	A5LHX3 ( <a href="#">UniProt</a> , <a href="#">ExPASy</a> )

# Datasheet

Version: 2.0.0  
Revision date: 24 Apr 2025



**Gene Symbol:** PSMB11

**GeneID:** [122706](#)

**OMIM:** [611137](#)

**HGNC:** 31963

**KEGG:** hsa:122706

**Ensembl:** ENSG00000222028

**String:** [9606.ENSP00000386212](#)

**Molecular Weight:** Observed MW: 32-35 kDa

**Buffer:** PBS, pH 7.3, with 0.02% sodium azide and 50% glycerol.

**Concentration:** 2 mg/ml

**Note:** THIS PRODUCT IS FOR RESEARCH USE ONLY. NOT FOR USE IN DIAGNOSTIC, THERAPEUTIC OR COSMETIC PROCEDURES. NOT FOR HUMAN OR ANIMAL CONSUMPTION.

For Reference Only