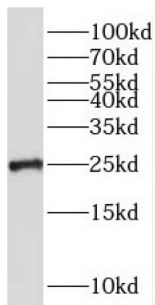
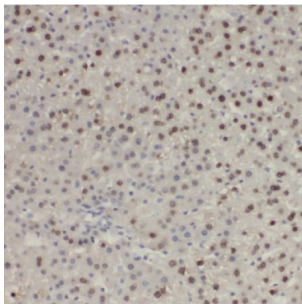


Proteasome Subunit Beta Type 3 (PSMB3) Antibody

Catalogue No.: abx236872



WB analysis of HeLa cells, using PSMB3 antibody (1/200 dilution).



IHC-P analysis of human liver tissue, using PSMB3 antibody (1/50 dilution).

PSMB3 Antibody is a Rabbit Polyclonal against PSMB3.

Target:	Proteasome Subunit Beta Type 3 (PSMB3)
Clonality:	Polyclonal
Reactivity:	Human, Mouse, Rat
Tested Applications:	ELISA, WB, IHC, IF/ICC
Host:	Rabbit
Recommended dilutions:	WB: 1/500 - 1/2000, IHC: 1/20 - 1/200, IF/ICC: 1/20 - 1/200. Optimal dilutions/concentrations should be determined by the end user.
Conjugation:	Unconjugated
Immunogen:	proteasome(prosome, macropain) subunit, beta type, 3
Isotype:	IgG
Form:	Liquid
Purity:	≥ 95% (SDS-PAGE)

Datasheet

Version: 4.0.0
Revision date: 12 Mar 2025



Purification:	Purified by immunogen affinity chromatography.
Storage:	Aliquot and store at -20°C. Avoid repeated freeze/thaw cycles.
Validity:	12 months.
UniProt Primary AC:	P49720 (UniProt , ExPASy)
Gene Symbol:	PSMB3
GeneID:	5691
OMIM:	602176
HGNC:	9540
KEGG:	hsa:5691
Ensembl:	ENSG00000277791
String:	9606.ENSP00000483688
Molecular Weight:	Observed MW: 23-27 kDa
Buffer:	PBS, pH 7.3, with 0.02% sodium azide and 50% glycerol.
Concentration:	2 mg/ml
Note:	THIS PRODUCT IS FOR RESEARCH USE ONLY. NOT FOR USE IN DIAGNOSTIC, THERAPEUTIC OR COSMETIC PROCEDURES. NOT FOR HUMAN OR ANIMAL CONSUMPTION.

For Reference Only