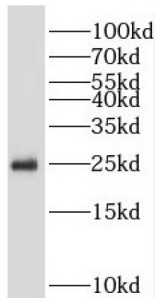
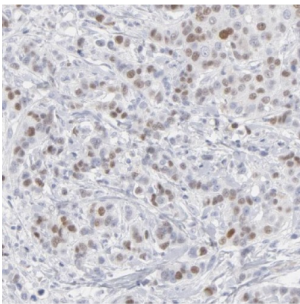


Proteasome Subunit Beta Type 4 (PSMB4) Antibody

Catalogue No.: abx236873



WB analysis of HEK-293 cells, using PSMB4 antibody (1/600 dilution).



IHC-P analysis of human breast cancer tissue, using PSMB4 antibody (1/50 dilution).

PSMB4 Antibody is a Rabbit Polyclonal against PSMB4.

Target:	Proteasome Subunit Beta Type 4 (PSMB4)
Clonality:	Polyclonal
Reactivity:	Human
Tested Applications:	ELISA, WB, IHC, IF/ICC
Host:	Rabbit
Recommended dilutions:	WB: 1/500 - 1/2000, IHC: 1/20 - 1/200, IF/ICC: 1/20 - 1/200. Optimal dilutions/concentrations should be determined by the end user.
Conjugation:	Unconjugated
Immunogen:	proteasome(prosome, macropain) subunit, beta type, 4
Isotype:	IgG
Form:	Liquid
Purity:	≥ 95% (SDS-PAGE)

Datasheet

Version: 2.0.0
Revision date: 28 Dec 2024



Purification:	Purified by immunogen affinity chromatography.
Storage:	Aliquot and store at -20°C. Avoid repeated freeze/thaw cycles.
Validity:	12 months.
UniProt Primary AC:	P28070 (UniProt , ExPASy)
Gene Symbol:	PSMB4
GeneID:	5692
OMIM:	602177
HGNC:	9541
KEGG:	hsa:5692
Ensembl:	ENSG00000159377
String:	9606.ENSP00000290541
Molecular Weight:	Observed MW: 25 kDa
Buffer:	PBS, pH 7.3, with 0.02% sodium azide and 50% glycerol.
Concentration:	2 mg/ml
Note:	This product is for research use only.

For Reference Only