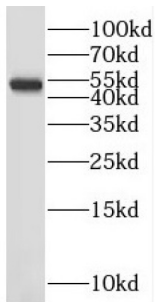
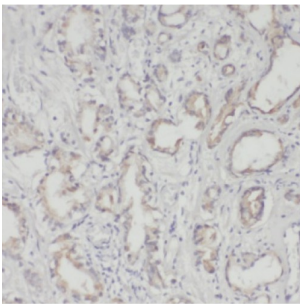


26S Proteasome Non-ATPase Regulatory Subunit 5 (PSMD5) Antibody

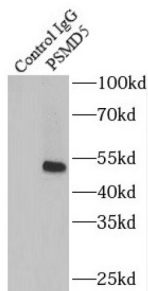
Catalogue No.: abx236891



WB analysis of mouse liver tissue, using PSMD5 antibody (1/1000 dilution).



IHC-P analysis of human prostate cancer tissue, using PSMD5 antibody (1/100 dilution).



IP analysis of mouse liver tissue lysate (4000 µg), using PSMD5 antibody (4 µg, detection: 1/1000 dilution).

PSMD5 Antibody is a Rabbit Polyclonal against PSMD5. The 26S proteasome is a multicatalytic proteinase complex with a highly ordered structure composed of 2 complexes, a 20S core and a 19S regulator. The 20S core is composed of 4 rings of 28 non-identical subunits; 2 rings are composed of 7 alpha subunits and 2 rings are composed of 7 beta subunits. The 19S regulator is composed of a base, which contains 6 ATPase subunits and 2 non-ATPase subunits, and a lid, which contains up to 10 non-ATPase subunits. Proteasomes are distributed throughout eukaryotic cells at a high concentration and cleave peptides in an ATP/ubiquitin-dependent process in a non-lysosomal pathway. This gene encodes a non-ATPase subunit of the 19S regulator base that functions as a chaperone protein during 26S proteasome assembly.

Target: 26S Proteasome Non-ATPase Regulatory Subunit 5 (PSMD5)

Clonality: Polyclonal

Reactivity: Human, Mouse, Rat

Tested Applications: ELISA, WB, IHC, IP

Datasheet

Version: 2.0.0
Revision date: 09 Jan 2025



| | |
|-------------------------------|---|
| Host: | Rabbit |
| Recommended dilutions: | WB: 1/500 - 1/2000, IHC: 1/20 - 1/200, IP: 1/200 - 1/1000. Optimal dilutions/concentrations should be determined by the end user. |
| Conjugation: | Unconjugated |
| Immunogen: | proteasome(prosome, macropain) 26S subunit, non-ATPase, 5 |
| Isotype: | IgG |
| Form: | Liquid |
| Purity: | ≥ 95% (SDS-PAGE) |
| Purification: | Purified by immunogen affinity chromatography. |
| Storage: | Aliquot and store at -20°C. Avoid repeated freeze/thaw cycles. |
| Validity: | 12 months. |
| UniProt Primary AC: | Q16401 (UniProt , ExPASy) |
| Gene Symbol: | PSMD5 |
| GeneID: | 5711 |
| OMIM: | 604452 |
| NCBI Accession: | NP_001257356.1, NM_001270427.1, NP_005038.1, NM_005047.3 |
| HGNC: | 9563 |
| KEGG: | hsa:5711 |
| Ensembl: | ENSG00000095261 |
| String: | 9606.ENSP00000210313 |
| Molecular Weight: | Observed MW: 50 kDa |
| Buffer: | PBS, pH 7.3, with 0.02% sodium azide and 50% glycerol. |
| Concentration: | 2 mg/ml |

Datasheet

Version: 2.0.0

Revision date: 09 Jan 2025



Note: This product is for research use only.

For Reference Only