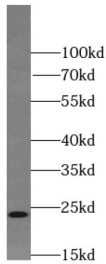
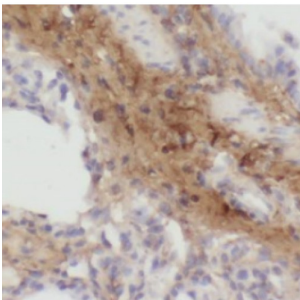


RAB11B-Specific Antibody

Catalogue No.: abx236989



WB analysis of human brain tissue, using RAB11B-Specific antibody (1/300 dilution).



IHC-P analysis of human lung tissue, using RAB11B-Specific antibody (1/100 dilution).

RAB11B-Specific Antibody is a Rabbit Polyclonal against RAB11B-Specific.

Target:	RAB11B-Specific
Clonality:	Polyclonal
Reactivity:	Human, Mouse, Rat
Tested Applications:	ELISA, WB, IHC
Host:	Rabbit
Recommended dilutions:	WB: 1/300 - 1/600, IHC: 1/20 - 1/200. Optimal dilutions/concentrations should be determined by the end user.
Conjugation:	Unconjugated
Immunogen:	RAB11B, member RAS oncogene family
Isotype:	IgG
Form:	Liquid
Purity:	≥ 95% (SDS-PAGE)

Datasheet

Version: 1.0.0
Revision date: 17 Sep 2024



Purification:	Purified by immunogen affinity chromatography.
Storage:	Aliquot and store at -20°C. Avoid repeated freeze/thaw cycles.
Validity:	12 months.
UniProt Primary AC:	Q15907 (UniProt , ExPASy)
Gene Symbol:	RAB11B
GeneID:	9230
OMIM:	604198
HGNC:	9761
KEGG:	hsa:9230
Ensembl:	ENSG00000185236
String:	9606.ENSP00000333547
Molecular Weight:	Observed MW: 24 kDa
Buffer:	PBS, pH 7.3, with 0.02% sodium azide and 50% glycerol.
Concentration:	2 mg/ml
Note:	This product is for research use only.

For Reference Only