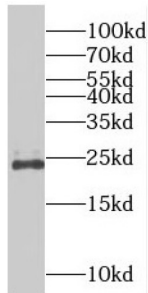


RAB9B, Member RAS Oncogene Family (RAB9B) Antibody

Catalogue No.: abx237050



WB analysis of HepG2 cells, using RAB9B antibody (1/300 dilution).

RAB9B Antibody is a Rabbit Polyclonal against RAB9B.

Target:	RAB9B, Member RAS Oncogene Family (RAB9B)
Clonality:	Polyclonal
Reactivity:	Human, Mouse, Rat
Tested Applications:	ELISA, WB, IF/ICC
Host:	Rabbit
Recommended dilutions:	WB: 1/500 - 1/2000, IF/ICC: 1/20 - 1/200. Optimal dilutions/concentrations should be determined by the end user.
Conjugation:	Unconjugated
Immunogen:	RAB9B, member RAS oncogene family
Isotype:	IgG
Form:	Liquid
Purity:	≥ 95% (SDS-PAGE)
Purification:	Purified by immunogen affinity chromatography.
Storage:	Aliquot and store at -20°C. Avoid repeated freeze/thaw cycles.
Validity:	12 months.
UniProt Primary AC:	Q9NP90 (UniProt , ExPASy)

Datasheet

Version: 2.0.0
Revision date: 17 Sep 2024



Gene Symbol: RAB9B

GeneID: [51209](#)

OMIM: [300285](#)

HGNC: 14090

Ensembl: ENSG00000123570

String: [9606.ENSP00000243298](#)

Molecular Weight: Observed MW: 23-25 kDa

Buffer: PBS, pH 7.3, with 0.02% sodium azide and 50% glycerol.

Concentration: 2 mg/ml

Note: This product is for research use only.

For Reference Only