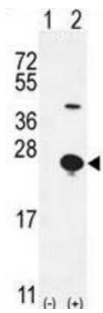
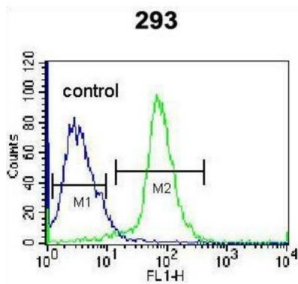


Epigen (EPGN) Antibody

Catalogue No.: abx026168



WB analysis of 293 cell lysates (1) non-transfected, and (2) transiently transfected with the EPGN gene.



Flow cytometric analysis of 293 cells (green) compared to a negative control cell (blue), using EPGN Antibody and FITC-conjugated goat anti-rabbit secondary antibody.

Promotes the growth of epithelial cells. May stimulate the phosphorylation of EGFR and mitogen-activated protein kinases.

Target:	Epigen (EPGN)
Clonality:	Polyclonal
Reactivity:	Human
Tested Applications:	ELISA, WB, FCM
Host:	Rabbit
Recommended dilutions:	WB: 1/1000, FCM: 1/10 - 1/50. Optimal dilutions/concentrations should be determined by the end user.
Conjugation:	Unconjugated
Immunogen:	KLH-conjugated synthetic peptide between 24-51 amino acids from the N-terminal region of human EPGN.
Isotype:	IgG
Form:	Liquid
Purification:	Purified through a protein A column, followed by peptide affinity purification.

Datasheet

Version: 2.0.0
Revision date: 24 Nov 2024



Storage: Aliquot and store at -20°C. Avoid repeated freeze/thaw cycles.

UniProt Primary AC: Q6UW88 ([UniProt](#), [ExPASy](#))

Gene Symbol: EPGN

KEGG: hsa:255324

String: [9606.ENSP00000411898](#)

Molecular Weight: Calculated MW: 17.1 kDa

Buffer: PBS containing 0.09% sodium azide.

Note: This product is for research use only.

For Reference Only