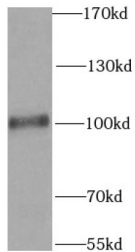
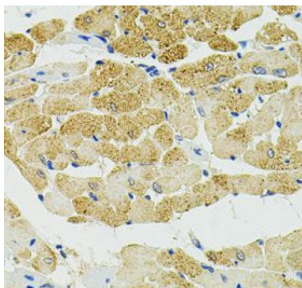


## RaIA-Binding Protein 1 (RALBP1) Antibody

Catalogue No.: abx237095



WB analysis of HeLa cells, using RALBP1 antibody (1/1000 dilution).



IHC-P analysis of rat heart tissue, using RALBP1 antibody (1/100 dilution).

RALBP1 Antibody is a Rabbit Polyclonal against RALBP1.

**Target:** RaIA-Binding Protein 1 (RALBP1)**Clonality:** Polyclonal**Reactivity:** Human, Mouse, Rat**Tested Applications:** ELISA, WB, IHC**Host:** Rabbit**Recommended dilutions:** WB: 1/500 - 1/2000, IHC: 1/50 - 1/200. Optimal dilutions/concentrations should be determined by the end user.**Conjugation:** Unconjugated**Immunogen:** raIA binding protein 1**Isotype:** IgG**Form:** Liquid**Purity:** ≥ 95% (SDS-PAGE)

# Datasheet

Version: 2.0.0  
Revision date: 02 Feb 2025



<b>Purification:</b>	Purified by immunogen affinity chromatography.
<b>Storage:</b>	Aliquot and store at -20°C. Avoid repeated freeze/thaw cycles.
<b>Validity:</b>	12 months.
<b>UniProt Primary AC:</b>	Q15311 ( <a href="#">UniProt</a> , <a href="#">ExPASy</a> )
<b>KEGG:</b>	hsa:10928
<b>String:</b>	<a href="#">9606.ENSP00000019317</a>
<b>Molecular Weight:</b>	Observed MW: 100 kDa
<b>Buffer:</b>	PBS, pH 7.3, with 0.02% sodium azide and 50% glycerol.
<b>Concentration:</b>	2 mg/ml
<b>Note:</b>	This product is for research use only.

For Reference Only